

50 ^{IN}
250

INVITATION

LAUNCH OF THE SOCIAL ENTERPRISE MARK'S '50 IN 250' CAMPAIGN

THE LIVERY HALL, 71 BASINGHALL STREET,
GUILDHALL, LONDON, EC2V 7HH

22ND NOVEMBER 2011, 8.30AM TO 10.30AM

The City of London Corporation is proud to support the Social Enterprise Mark's '50 in 250' Campaign - designed to promote the use of Social Enterprises in supply chains.

This pioneering campaign will help 50 large companies pledge to do business with at least 5 certified social enterprises each, within 250 days. It aims to provide an easy and valuable way to develop an ethical, innovative and diverse supply chain.

This campaign will be launched at a breakfast seminar, hosted by the City of London, at The Livery Hall on Tuesday 22nd November 2011, from 8.30am.

Formal proceedings will begin at 9.00am and will include speeches by Gordon Morris, Chair, Social Enterprise Mark and Paul Sizeland, Director of Economic Development at the City Corporation.

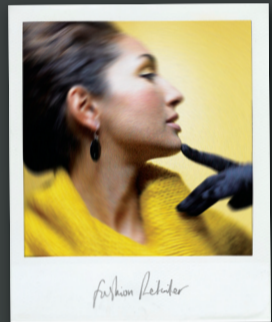
We would be delighted if you joined us for breakfast to launch the '50 in 250' campaign and to learn more about the benefits of incorporating certified social enterprises into your supply chain. There will be time to meet owners of social enterprises and to find out about the services they have to offer e.g. catering, event management, logistics. We will also be developing a comprehensive directory listing relevant services provided by social enterprises which will be available to takeaway on the day.

TO REGISTER YOUR ATTENDANCE, [CLICK HERE](#)

Please RSVP by 11th November. This event is free to attend.

Why not invite one of your procurement or corporate responsibility colleagues to attend as well?

For all booking enquiries, please contact Sensevents on 0845 835 0505 or email events@sensevents.org



This event is brought to you by:



This event is sponsored by:



Event managed by certified social enterprise:

sensevents
MAKE A CHANGE

www.50in250.org