

CYCLING IN THE CITY

The Corporation of London and the City of London Police work constantly to maintain the 'Square Mile' as a safe environment for all road users.

Whilst improvements are being made to benefit individual user groups, the Corporation recognises the need for a step-change in provision for cycles and supports the high quality routes of the London Cycle Network +.

The map overleaf shows the location of cycle parking sites in the City, together with other facilities to aid cyclists.



CYCLE FACILITIES IN THE CITY

Cycle Routes (signed and unsigned) can be found throughout the City. Detailed route information can be obtained from the London Cycle Network (www.londoncyclenetwork.org) and from Transport for London's free cycle guides, which are available from the TfL and LCC websites.

Cycle Lanes can be found running along the side of vehicle lanes. Dashed lines indicate an **advisory lane** which other vehicles are not allowed to enter unless it is unavoidable. Continuous white lines indicate a **mandatory lane** which other vehicles are not allowed to enter except in an emergency, unless they are taxis picking up or dropping off passengers.

In some areas pavements and footpaths have been designated as **shared use areas**, for both cyclists and pedestrians. Look out for pedestrians in these areas and always give way to them. Remember, cycling is not permitted on footways next to the road and those footways where there are signs forbidding it.

Bus Lanes – Cyclists may use bus lanes where the signs show the cycle symbol or where the cycle logo is marked on the carriage way.

Cycle Exemptions have been made at junctions and road closures to give cyclists an advantage over other vehicles. Take care when rejoining the main traffic flow.

At some signal controlled junctions **Advance Stop Lines** are provided. These have a cycle lane on the approach to the junction and an area clearly marked for cyclists to wait for the lights to change in front of other traffic. Position yourself in the appropriate part of the box for the direction you will be travelling in. Try to leave space for other cyclists behind you to be able to come in and use the box as well.

On Street Cycle Parking Facilities have been provided throughout the City. Please lock your bicycle to these racks and not to other street furniture (for on street cycle rack locations, see map overleaf).



DOS AND DON'TS OF CYCLING

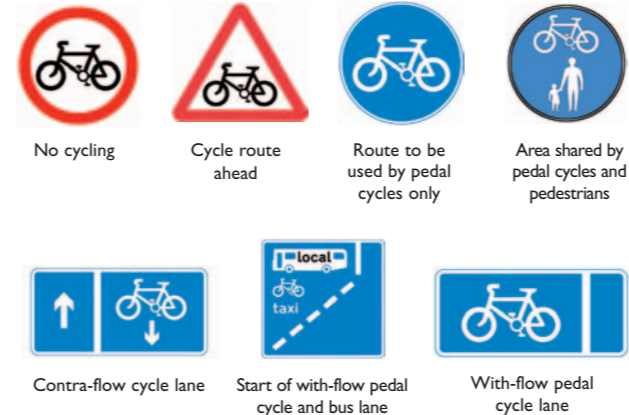
DO:

- ④ Use the cycle facilities wherever possible and plan your route using a cycle map.
- ④ Obey traffic signs and signals, particularly at junctions.
- ④ Always be alert and assume that other road users have not seen you – pay special attention to the movements of pedestrians.
- ④ Look out for obstructions and obstacles, such as traffic calming measures, drain covers, parked cars and uneven street surfaces.
- ④ Try to wear bright clothes – fluorescent clothes or bands are best – and always use lights at night.
- ④ Wear a properly fitting helmet that conforms to a recognised standard.
- ④ Use a bell so that you can warn pedestrians you are approaching.
- ④ Give lorries and other large vehicles room at junctions. If you creep up on the inside you may end up in their blind spots.
- ④ Ensure that your cycle is in good condition and is well maintained.

DON'T:

- ④ Cycle on footways next to the road or those footways where there are signs forbidding it - it is an offence to do so.
- ④ Cycle too close to the kerb or parked vehicles as it makes you less visible - keep 1m away.
- ④ Carry bags from your handlebars. Use a rucksack or buy a rack and bike panniers.
- ④ Cycle across pedestrian crossings unless they are special cycle or toucan crossings.
- ④ Carry passengers on your cycle unless it is designed or properly adapted to do so.

SIGNS AND INFORMATION



CYCLE SECURITY

The fear of cycle theft is one of the most commonly cited reasons for not cycling. Recognising that fact the Corporation of London has installed convenient cycle stands throughout the City, many of which are closely monitored by CCTV.

In addition, the Corporation of London has also installed a number of secure cycle racks in its public car parks. It is also a planning requirement that cycle parking is provided for all new, large scale, office developments in the City.

In order to provide even greater security for commuter cyclists, the Corporation of London intends to introduce secure cycle lockers at railway and underground stations.

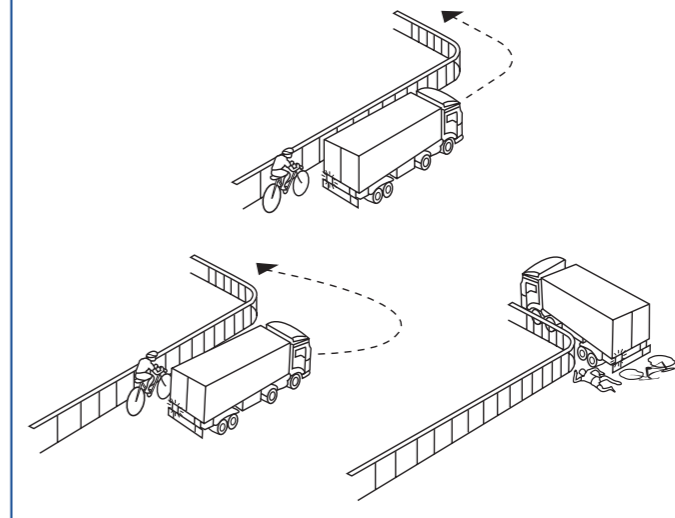
Enjoy peace of mind by following these helpful security tips:

- ④ Leave your bike where a potential thief can be easily seen.
- ④ Always secure your bike, even if you are just leaving it for a minute. Consider using a second lock or cable so that your saddle and both wheels are secured if leaving your cycle on the street for more than a few hours.
- ④ Use a reputable, approved security device such as a chain or D-Lock. For a complete list of approved products talk to your local cycle shop, the police or contact "Sold Secure" at www.soldsecure.com.
- ④ Permanently marking your bike will discourage theft and help your chances of getting it back if stolen. Marking/tagging can be carried out at most cycle shops and by the police.
- ④ Register your bike with the City of London Police cycle registration scheme.
- ④ Buy security equipment according to the risk. For an expensive bike or in a high theft area use products that offer the greatest theft resistance.
- ④ When buying a new bike make sure you budget for security. If buying a second hand bike, make sure the seller really owns the bike. If you think you are being offered a stolen bike ring **Crimestoppers** on **0800 555 111**.

REACHING A TURNING POINT

Over half of cyclist fatalities in central London involve left turning lorries. However, with a little extra care this situation can be avoided.

- A** - Cyclists – take care, hold back, be aware that a lorry can turn at any corner.
- B** - Never cut inside a lorry if there is a chance it could be turning.
- C** - Remember large vehicles have many blind spots – keep out of them.



CYCLES ON TRAINS

Cycles can be carried on the trains of all National Rail companies, although each company has its own specific policy. For details, contact:

- ④ The individual companies (details can be found via the National Rail website at www.nationalrail.co.uk, or through the A to B magazine website www.atob.org.uk)
- ④ National Rail Enquiries on **08457 48 49 50** (24 hour, local rate)

Cycles are allowed during off-peak travel times on most trains and also on Underground services outside deep tube sections. When undertaking longer journeys involving several companies, reservations should be made as far in advance as possible.

Compact folding bikes are carried free on most rail services. For details, please refer to the conditions of carriage for the company concerned.





CORPORATION OF LONDON

The Corporation of London is the provider of local government services to the City of London, looking after the world's leading international financial and business centre.

This handy guide has been produced by the Corporation of London in recognition of the important role that cycling plays in the vitality of the City, and to increase the proportion of journeys made by cycle.



USEFUL CONTACTS

Transport for London:

Tel: 020 7222 1234
(London Travel Information)
www.tfl.gov.uk
www.journeyplanner.org
(free TfL cycle guides via this website)

London Cycle Network:

Tel: 020 7974 8747
www.londoncyclenetwork.org.uk

London Cycling Campaign:

Unit 228
30 Great Guildford Street
London
SE1 0HS
Tel: 020 7928 7220
www.lcc.org.uk
(includes a series of handy guides on everything from cycling to work to carrying children with you on your bike)

City Cyclists:

(LCC City of London local group)
E-mail: info@citycyclists.org.uk
www.citycyclists.org.uk



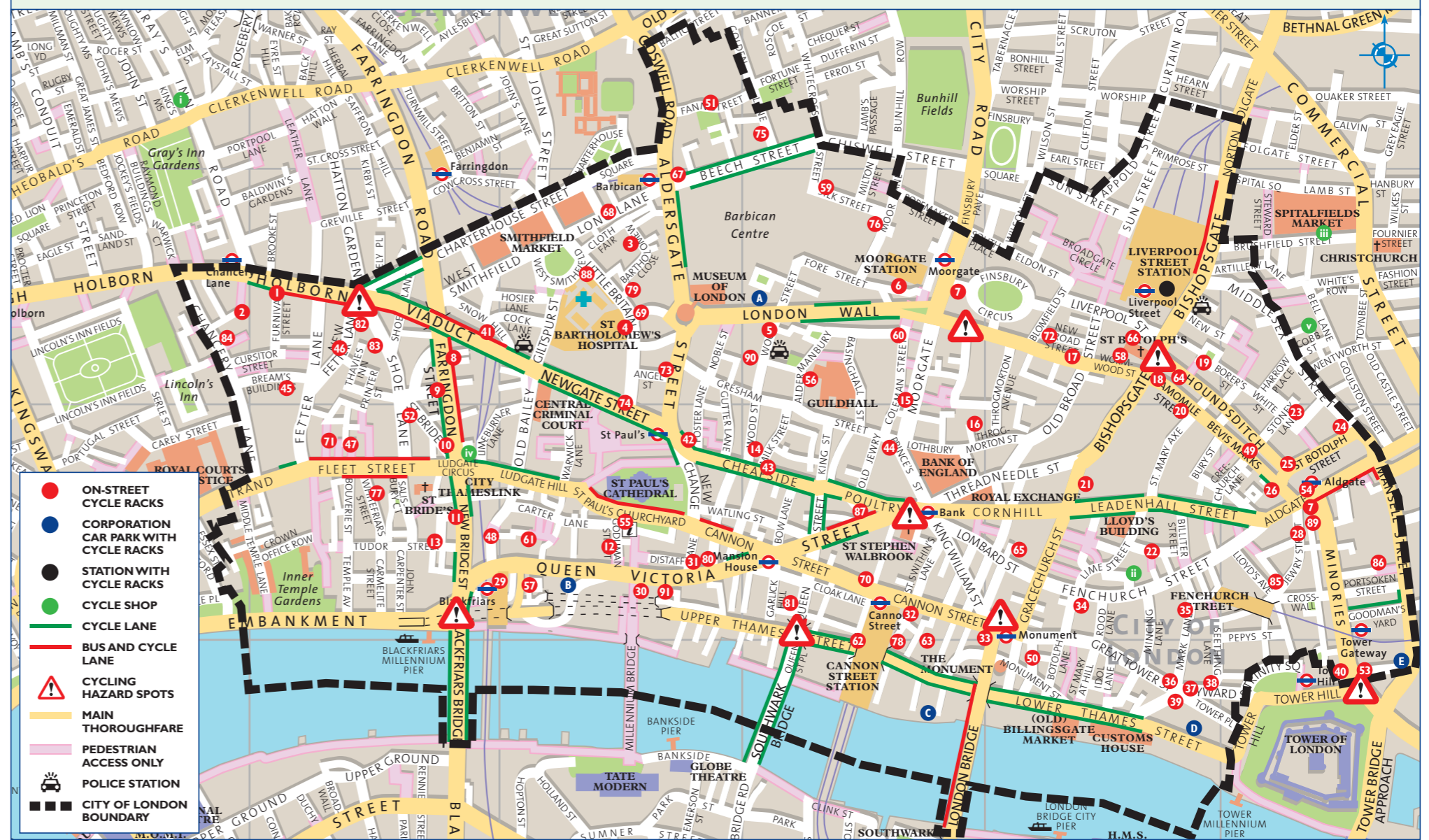
ON-STREET CYCLE RACK LOCATIONS

Site No.	Location	Capacity
1	Holborn	20
2	Southampton Buildings	10
3	Bartholomew Close (Kinghorn Street)	4
4	Little Britain	4
5	Wood Street (London Wall)	8
6	Fore Street Avenue	6
7	Finsbury Circus (Moorgate)	18
8	Farringdon Street	10
9	Stonecutter Street	10
10	Farringdon Street/St. Bride Street	10
11	Bridewell Place	4
12	Godliman Street	10
13	Bridewell Place/Tudor Street	4
14	Wood Street	6
15	Great Bell Alley	6
16	Angel Court	10
17	London Wall (All Hallows)	6
18	Camomile Street (Bishopsgate)	10
19	Devonshire Square	6
20	Camomile Street (No. 12-20)	18
21	Bishopsgate (No. 8)	14
22	Fen Court	10
23	White Kennett Street	10
24	St. Botolph Street	10
25	Houndsditch (St. Botolph Street)	10
26	Duke's Place	10
27	Aldgate High Street/Minories	4
28	Jewry Street	10
29	Queen Victoria Street/Puddle Dock	10
30	Queen Victoria Street/Peter's Hill	8
31	Old Fish Street Hill	4
32	Cannon Street/Bush Lane	6
33	Cannon Street/King William Street	10
34	Philpot Lane	10
35	Mark Lane	6
36	Great Tower Street	4
37	Byward Street	8
38	Seething Lane	8
39	Great Tower Street/Byward Street	10
40	Minories	10
41	Holborn Viaduct	6
42	Cheapside	6
43	Cheapside/Milk Street	8
44	Lothbury	8
45	Bream's Buildings	8
46	New Fetter Lane/Plough Place	6
47	Bolt Court	10
48	Blackfriars Lane	8
49	Bevis Marks	6
50	Pudding Lane	6
51	Fann Street	8
52	St. Bride Street/Shoe Lane	14
53	Shorter Street/Minories	16
54	Aldgate High Street (St. Botolph Church)	16
55	St. Paul's Churchyard	20
56	Aldermanbury	14
57	Puddle Dock (Wall Hoops)	6
58	Bishopsgate Churchyard (Wall Hoops)	3
59	Silk Street	54
60	Coleman Street	8
61	Ireland Yard	12
62	Dowgate Hill	4



Site No.	Location	Capacity
63	Laurence Pountney Hill	4
64	Outwich Street	6
65	George Yard	6
66	Alderman's Walk	6
67	Aldersgate Street (A) (Holme's Place)	20
68	Long Lane/Lindsey Street	6
69	Montague Street	8
70	Cannon Street/Walbrook	16
71	Red Lion Court	6
72	New Broad Street	6
73	Aldersgate Street/St. Martin's Le Grand	18
74	Newgate Street	24
75	Golden Lane	10
76	Moor Lane/Silk Street	6

Cycle facilities in the City of London



Site No.	Location	Capacity
77	Whitefriars Street	4
78	Bush Lane (South)	4
79	Bartholomew Close/Little Britain	6
80	Friday Street	20
81	Doby Court	6
82	Holborn Circus	6
83	Shoe Lane/St. Andrew's Street	12
84	Quality Court	6
85	Crutched Friars	8
86	Haydon Street	6
87	Cheapside (Tesco)	4
88	West Smithfield	8
89	Minories	8
90	Oat Lane	14
91	Lambeth Hill	6



CORPORATION CAR PARK CYCLE FACILITIES

Site	Location
A	London Wall
B	Baynard House
C	Swan Lane
D	Tower Hill
E	Minories

CYCLE SHOPS

Site	Shop & Location
i	Condor Cycles - 51-53 Grays Inn Road
ii	Evans Cycles - 5 Cullum Street
iii	Evans Cycles - 1 Market Street
iv	Evans Cycles - 1 Farringdon Street
v	Cycle Surgery - Brody House, Strype St.

Details of cycle hire locations can be found at www.lcc.org.uk/index.asp?PageID=177
NOTE: LCC members receive a 5-10% discount (except on labour charges) at all of these shops.