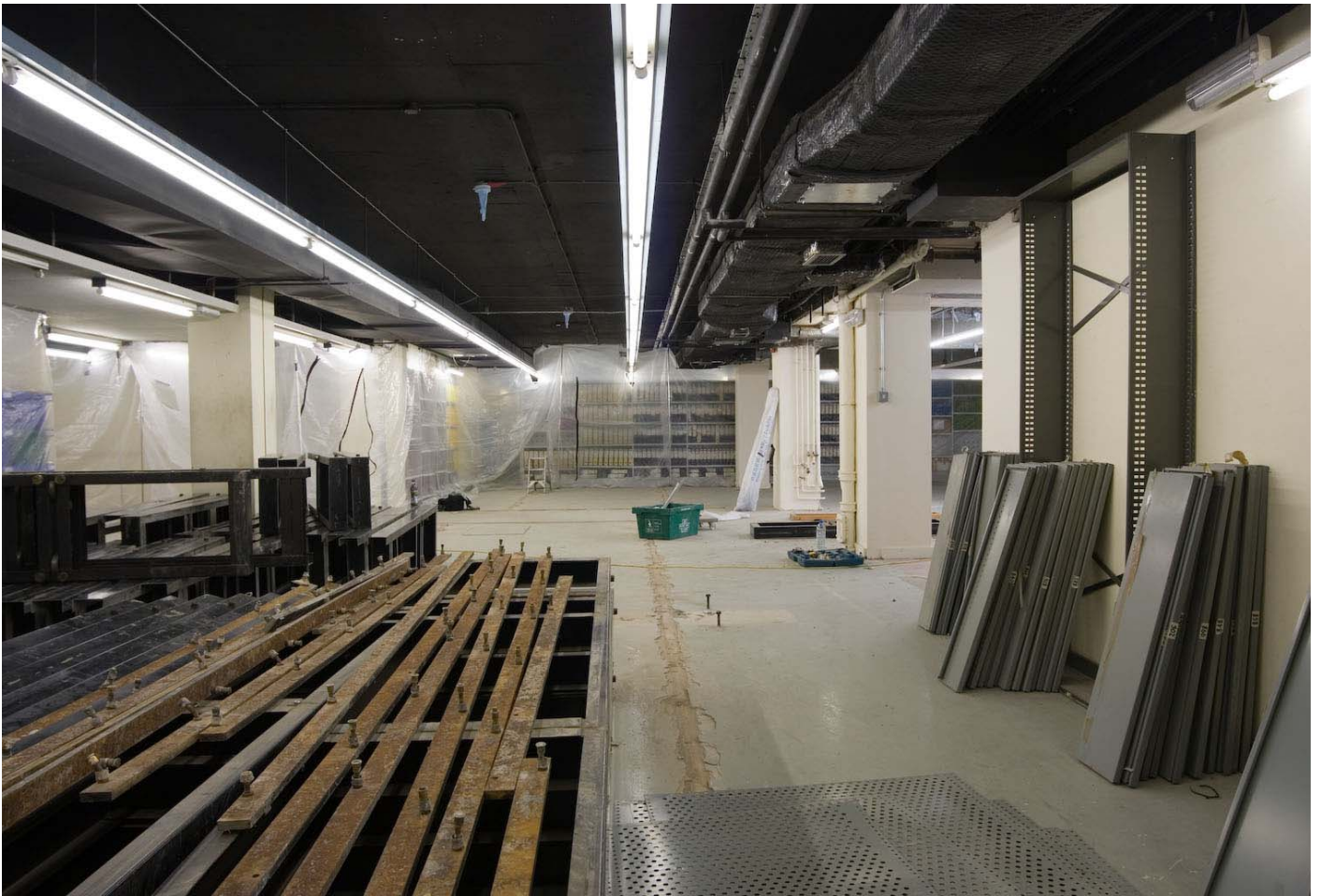




# Renewing Guildhall Library

Guildhall Library is to be extensively refurbished for the first time since 1974, with significant improvements including more public computer workstations, a new training area, new access facilities for wheelchair users and planned reinstatement of a dedicated entrance.



*In Guildhall Library's sub-basement walls and fittings from a former workshop have been removed to allow for new shelving to increase storage*

The new look Guildhall Library will house the City Business Library on the ground floor and the existing Printed Books and Manuscripts teams on the first floor. The Prints and Maps team and collections will move to London Metropolitan Archives permanently to unite with the rich graphic collections there.

Guildhall Library Manuscripts, the record office for the “square mile” of the City of London, will modernise its reading room, with improved facilities for readers including access to digitised family history sources. During the building work, expected to start in March 2009 and last up to six months, the Guildhall Library Manuscripts reading room will close and access to its holdings will be offered at the reading rooms of London Metropolitan Archives, in Clerkenwell (40 Northampton Road, London EC1 OHB). Material already on microfilm in the Guildhall Library Manuscripts reading room will be available on microfilm at LMA. All other records will be produced at LMA but will need to be ordered 48 hours in advance as they will still be stored in the City. Guildhall Manuscripts staff will be on hand at Clerkenwell to give help and advice as usual during the closure. Readers intending to visit Guildhall Library in 2009 are encouraged to discuss their research plans at an early date.

The Prints and Maps collections and team will be moving to London Metropolitan Archives permanently in late March 2009. Readers intending to use the collections at this time are encouraged to contact the prints and maps enquiry service to discuss their research plans at an early date as collections will be temporarily unavailable during the move. Once moved the prints, drawings, maps and photographs will continue to be fully accessible during normal opening times at London Metropolitan Archives, without prior appointment, via the existing online library catalogue (a text-only database), via Collage (an image database) and also via specialist staff at the enquiry desk.

The London Metropolitan Archives reading rooms have recently been refurbished to a high standard and provide a light and open working space in which readers will continue to view originals. A comprehensive reproduction service will also be available and it is intended to provide complementary services by digitising the remainder of the Guildhall collection as well as the entire London Metropolitan Archives collection, using onsite state of the art scanning equipment.

Guildhall Library Printed Books Section will move from the ground floor of the Library to the first floor space vacated by the Prints and Maps Section in the summer of 2009. This area will be extensively refurbished before the new reading room opens. In addition, to ensure that our collections can grow, we have started building work to expand our storage facilities. This work is scheduled for completion in January 2009 and until then some collections will be inaccessible and intending visitors should email [printedbooks.guildhall@cityoflondon.gov.uk](mailto:printedbooks.guildhall@cityoflondon.gov.uk) or telephone 020 7332 1868/1870 in advance of their visit to check the availability of material.

Guildhall Library  
Aldermanbury  
London  
EC2V 7HH

Visit our Website at [www.cityoflondon.gov.uk/guildhalllibrary](http://www.cityoflondon.gov.uk/guildhalllibrary) or contact us at:

Printed Books Section: 020 7332 1868/1870 [printedbooks.guildhall@cityoflondon.gov.uk](mailto:printedbooks.guildhall@cityoflondon.gov.uk)

Manuscripts Section: 020 7332 1863/1863 [manuscripts.guildhall@cityoflondon.gov.uk](mailto:manuscripts.guildhall@cityoflondon.gov.uk)

Prints and Maps Section: 020 7332 1839 [prints&maps@cityoflondon.gov.uk](mailto:prints&maps@cityoflondon.gov.uk)

