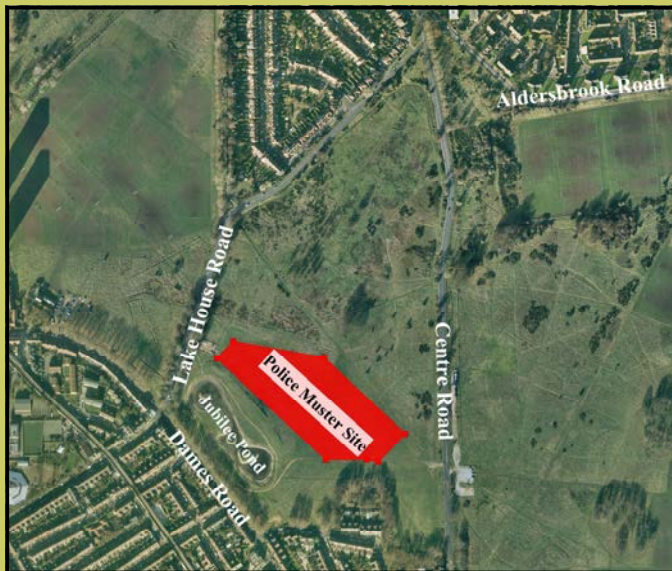


Wanstead Flats Consultation



The Metropolitan Police will be using part of Wanstead Flats during the 2012 Olympic and Paralympic Games for a Muster, Briefing and Deployment Centre.

For 90 days the police will be on site using the area between Centre Road and Lake House Road.



The City of London, as Conservators of Epping Forest, will receive **£170,000** from the police as compensation for accommodating the muster station on Wanstead Flats. The money will be used solely to improve an area on the Flats and we need your helping deciding where the money is spent.

Please vote for the project you think should receive the Police funding in 2012/13.

We have identified four projects, one of which will start in 2012/13 using the police money.

- Alexandra Lake: improve the landscape
- Bush Wood: restore the tree avenues
- Capel Road: redevelop the sports facility
- Jubilee Pond: reline the leaking pond

The funding will only cover one project and we will seek alternative funding for the remaining projects in the future.

Wanstead Flats Consultation



Gateway to the Forest

Wanstead Flats, 450 acres in the heart of East London and the most southerly part of Epping Forest, Wanstead Flats is important for its wildlife and history as well as for recreation in one of the most densely populated areas of London.

Wanstead Flats was saved from enclosure by the actions of local people and the City of London over 130 years ago, due to a long history of common grazing rights. Along with the rest of Epping Forest, it has been owned and cared for by the City of London since.

The Opportunity

The Metropolitan Police are planning to site a temporary muster station on Wanstead Flats for 90 days during the Olympic and Paralympic Games. Compensation of £170,000 is being offered to enhance local amenities on Wanstead Flats. In addition to the police restoring the land to its original condition.

The money is an opportunity to bring forward a project that might not otherwise be a priority in the current economical climate.



Wanstead Flats Consultation



Alexandra Lake

Situated just off Aldersbrook Road, opposite the parade of shops, Alexandra Lake has been popular with visitors since the Victorian era. Although a wide variety of wildfowl can be spotted here, the lake and surrounding area need improving to create a healthy habitat for wildlife and better experience for visitors.

What we would like to do

- Improve the car park making it secure at night time
- Study the hydrology and water quality to determine and address the health of the lake
- Plant vegetation round the lake to improve the wildlife habitat
- Clear the invasive plant *crassula helmsii* (Australian swamp stonecrop) from the lake banks to allow native plants to flourish
- Improve seating, signage and information
- Re-profile the bank opposite the shops to allow water to run off the road and into the lake instead of pooling in between.



To vote for **Alexandra Lake**, please email
epping.forest@cityoflondon.gov.uk before **31 October**

Wanstead Flats Consultation



Bush Wood

Situated between Bush Road and Blake Hall Road, Bush Wood is made up of avenues of trees planted in 1764 radiating out from Wanstead House.

Today these avenues of lime and sweet chestnut trees are Grade II* Listed as they make up part of the informal gardens of Wanstead House, which includes the current Wanstead Park. As well as having historical value, these veteran trees are home to a large variety of rare wildlife including birds, bats, fungi, lichens and mosses.

What we would like to do

- A comprehensive survey of the survival and condition of the tree avenues
- Identify the avenues and clear the vegetation from around the trees to restore the tree lines
- Crown reduction work to adjacent trees giving the trees in the avenues space to breathe, helping to prolong their life
- Replace selected dead trees within the avenues.

To vote for **Bush Wood**, please email
epping.forest@cityoflondon.gov.uk before **31 October**

Wanstead Flats Consultation



Capel Road

Wanstead Flats provides an important space for a variety of formal and informal sports. It is ideally situated on the borders of the London Boroughs of Waltham Forest, Redbridge and Newham.

In addition to over 60 football pitches, there is a route marked trail which is used for organised events such as the weekly Park Run and Health Walks. This and the other trails across the Flats are used by walkers, joggers, horse riders and cyclists.

What we would like to do

- Redevelop the sports facility situated on Capel Road
- Provide facilities for both men and women, team changing rooms, secure bag storage and separate changing for match officials.

The existing buildings at Capel Road are no longer fit for purpose and require refurbishment or redevelopment if they are to be used as public changing rooms, offices, a community space and perhaps even a café. This project may require additional funding from sporting bodies. The £170,000 will help us to secure this.

To vote for **Capel Road**, please email
epping.forest@cityoflondon.gov.uk before **31 October**

Wanstead Flats Consultation



Jubilee Pond

Jubilee Pond situated just off Lake House Road; it used to be known as Dames Road Pond and then the Model Yacht Pond.

The construction of road cuttings for the A406 and M25 have interrupted ground water supplies. The lake is now supplied with water pumped from underground. But water levels are still low as the clay pond lining has deteriorated and been damaged.

Jubilee Pond is a very popular spot to walk, play or enjoy nature with an active local group who run activities such as pond dipping for children and keep the pond tidy with regular litter picking.

What we would like to do

- Reline the pond to avoid the loss of precious water
- Explore other sources of water, for example from nearby drainage ditches

Landscaping works as part of the Heritage Lottery funded Branching Out project are programmed for late 2012. This work will include a new accessible trail, pond dipping decks, signage and information and planting of vegetation to encourage a wider variety of wildlife.

To vote for **Jubilee Pond**, please email
epping.forest@cityoflondon.gov.uk before **31 October**