

c52 Tower of London: Inner Ward - at north-west corner of the White Tower

ED-HTB6



Existing prospect

View Definition

Authority

Historic Royal Palaces

Policy Document

Tower of London | Local Setting Study [August 2010]

Location Reference

RV1

Camera Location

National Grid Reference 533589.1E 180570.6N

Camera height 12.50m AOD

Looking at The Central Cluster

Bearing 307.7°, distance 0.7km

Photography Details

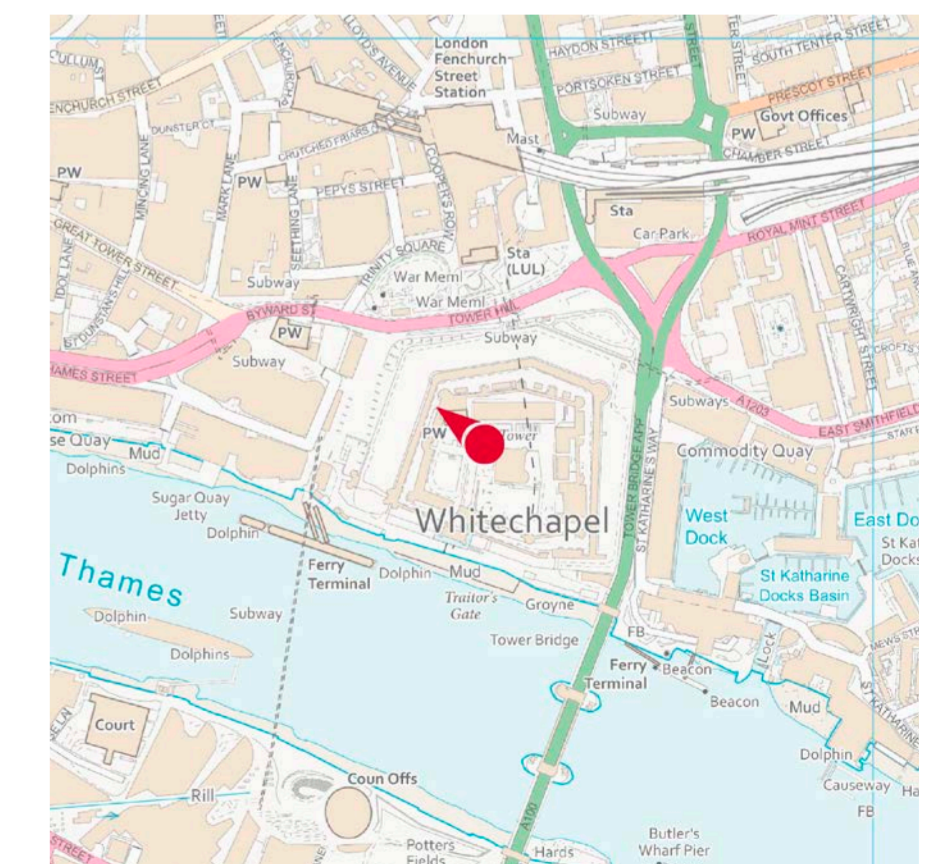
Height of camera 1.60m above ground

Date of photograph 12/03/2020

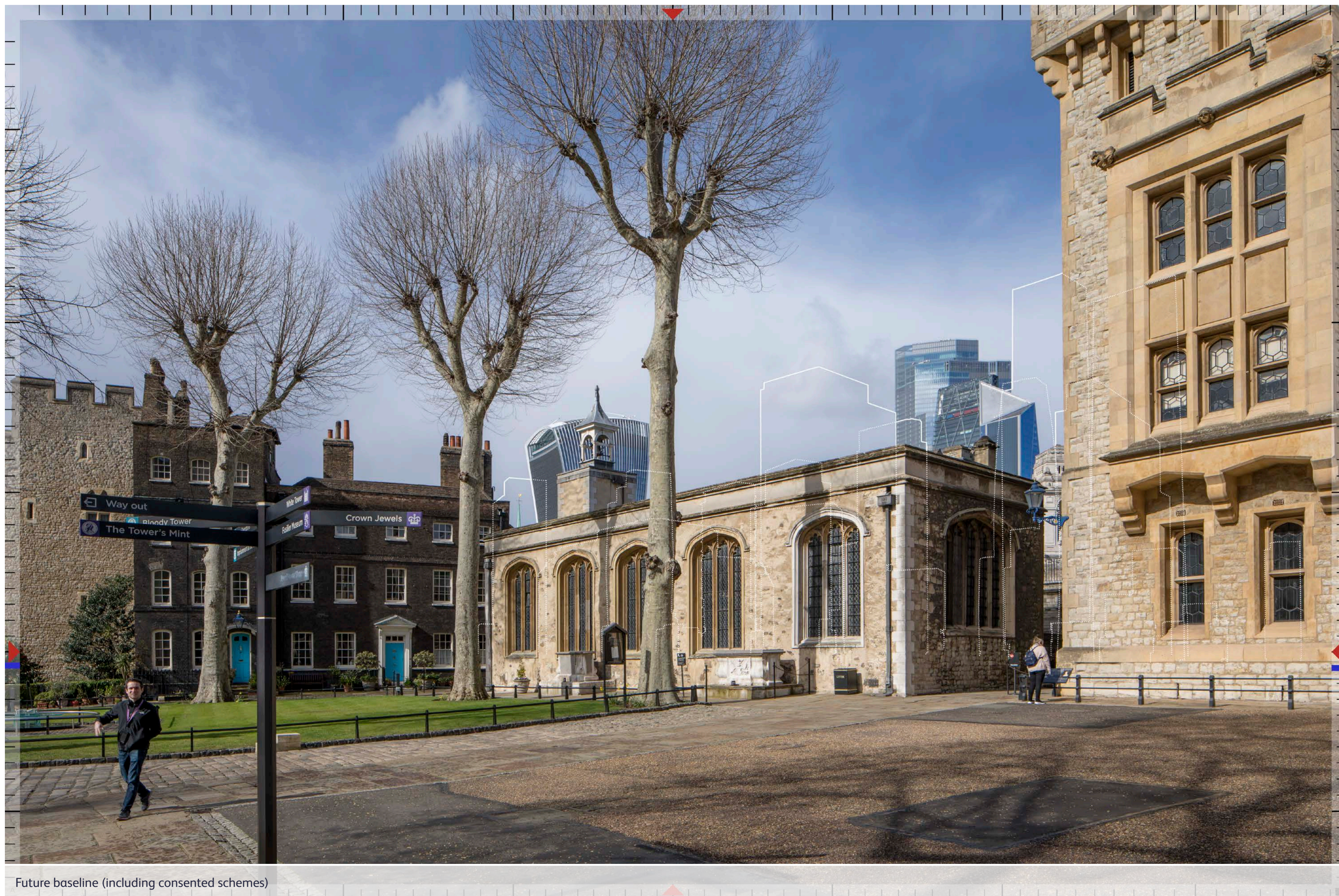
Time of photograph 12:19

Canon EOS 5D Mark IV DSLR

Lens 24mm



c52 Tower of London: Inner Ward - at north-west corner of the White Tower



Future baseline (including consented schemes)

View Definition

Authority

Historic Royal Palaces

Policy Document

Tower of London | Local Setting Study [August 2010]

Location Reference

RV1

Camera Location

National Grid Reference 533589.1E 180570.6N

Camera height 12.50m AOD

Looking at The Central Cluster

Bearing 307.7°, distance 0.7km

Photography Details

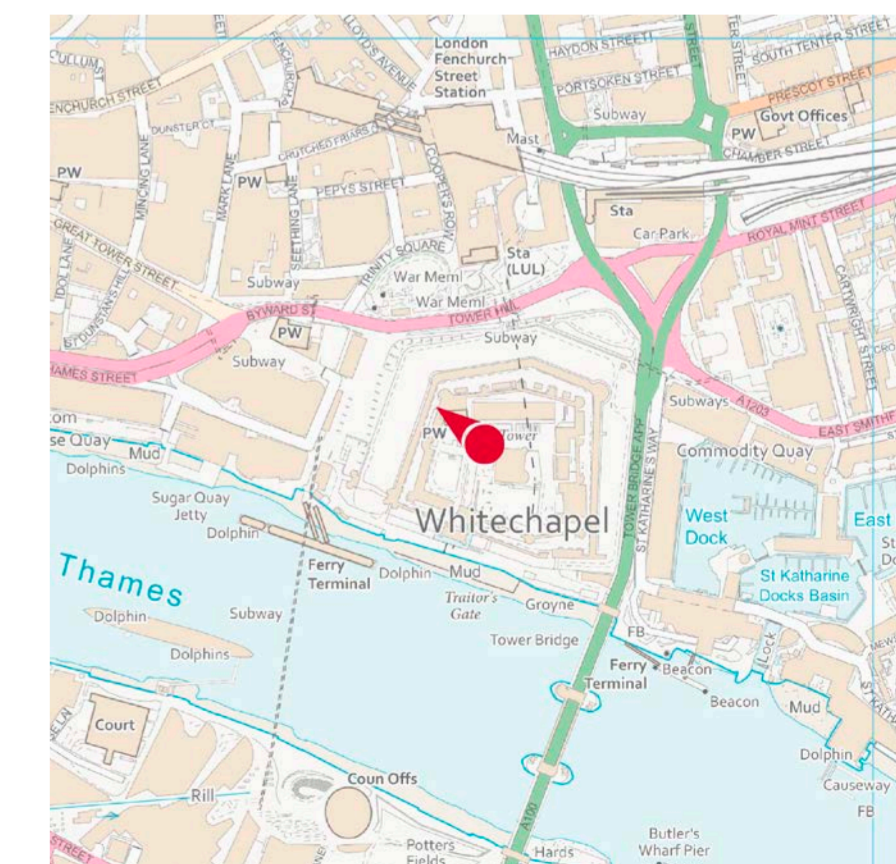
Height of camera 1.60m above ground

Date of photograph 12/03/2020

Time of photograph 12:19

Canon EOS 5D Mark IV DSLR

Lens 24mm



c52 Tower of London: Inner Ward - at north-west corner of the White Tower



Option B: Stepped envelope including defing contours

View Definition

Authority

Historic Royal Palaces

Policy Document

Tower of London | Local Setting Study [August 2010]

Location Reference

RV1

Camera Location

National Grid Reference 533589.1E 180570.6N

Camera height 12.50m AOD

Looking at The Central Cluster

Bearing 307.7°, distance 0.7km

Photography Details

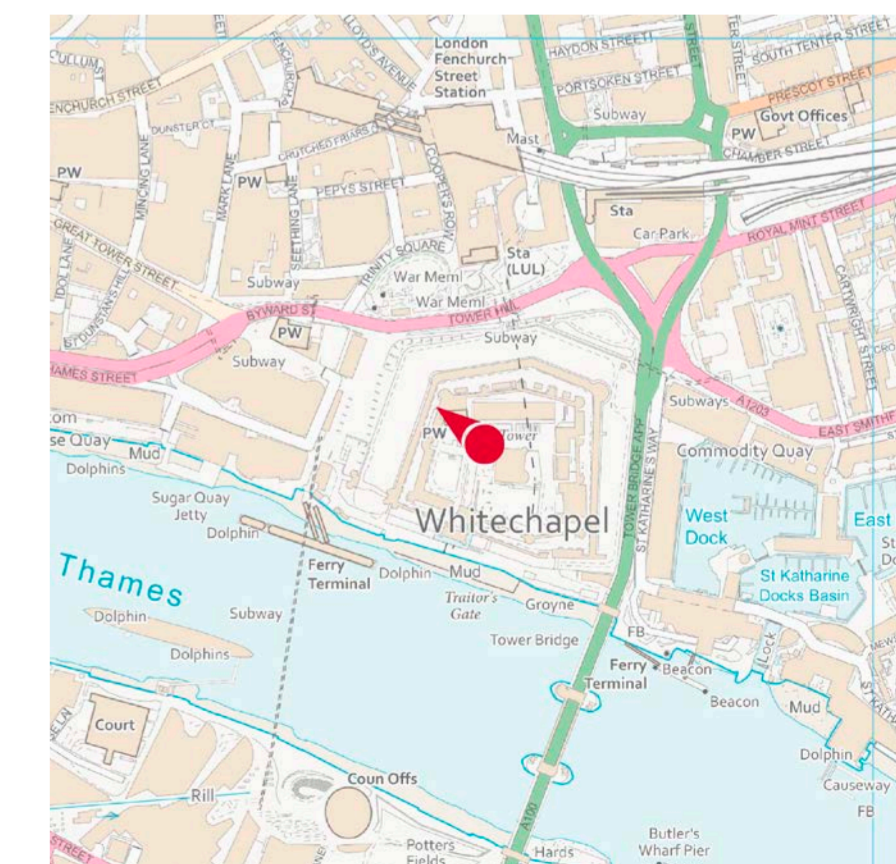
Height of camera 1.60m above ground

Date of photograph 12/03/2020

Time of photograph 12:19

Canon EOS 5D Mark IV DSLR

Lens 24mm



c52 Tower of London: Inner Ward - at north-west corner of the White Tower



Option B: Smoothed envelope indicating potential outcome from detailed assessment of specific sites

View Definition

Authority

Historic Royal Palaces

Policy Document

Tower of London | Local Setting Study [August 2010]

Location Reference

RV1

Camera Location

National Grid Reference 533589.1E 180570.6N

Camera height 12.50m AOD

Looking at The Central Cluster

Bearing 307.7°, distance 0.7km

Photography Details

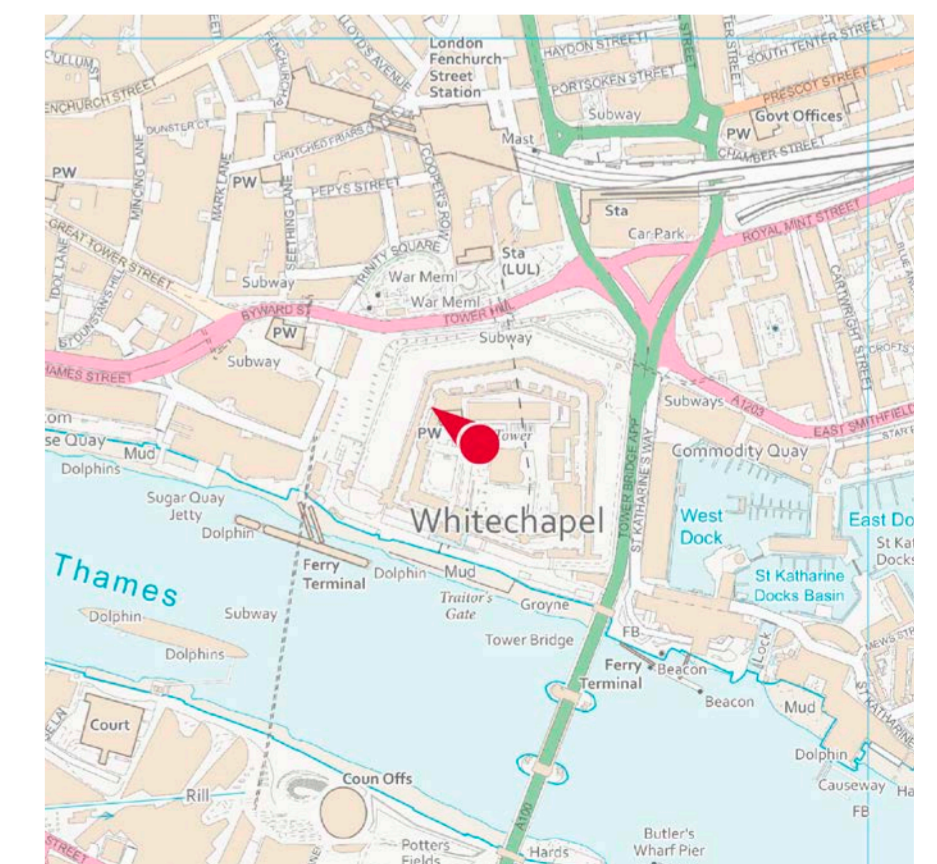
Height of camera 1.60m above ground

Date of photograph 12/03/2020

Time of photograph 12:19

Canon EOS 5D Mark IV DSLR

Lens 24mm



c58 Tower of London: Inner Curtain Wall south



Existing prospect

View Definition

Authority

Historic Royal Palaces

Policy Document

Tower of London | Local Setting Study [August 2010]

Location Reference

RV4

Camera Location

National Grid Reference 533604.4E 180483.9N

Camera height 13.41m AOD

Looking at The Central Cluster

Bearing 328.6°, distance 0.8km

Photography Details

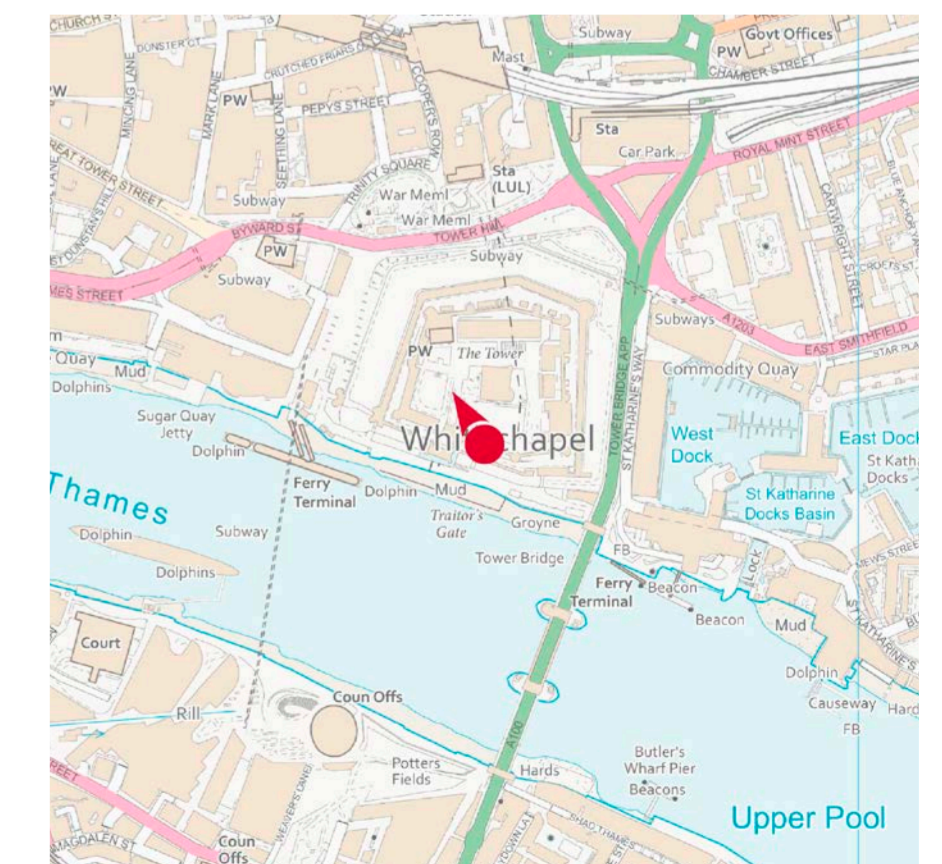
Height of camera 1.60m above ground

Date of photograph 24/03/2022

Time of photograph 10:02

Canon EOS 5D Mark IV DSLR

Lens 24mm



c58 Tower of London: Inner Curtain Wall south



Future baseline (including consented schemes)

View Definition

Authority

Historic Royal Palaces

Policy Document

Tower of London | Local Setting Study [August 2010]

Location Reference

RV4

Camera Location

National Grid Reference 533604.4E 180483.9N

Camera height 13.41m AOD

Looking at The Central Cluster

Bearing 328.6°, distance 0.8km

Photography Details

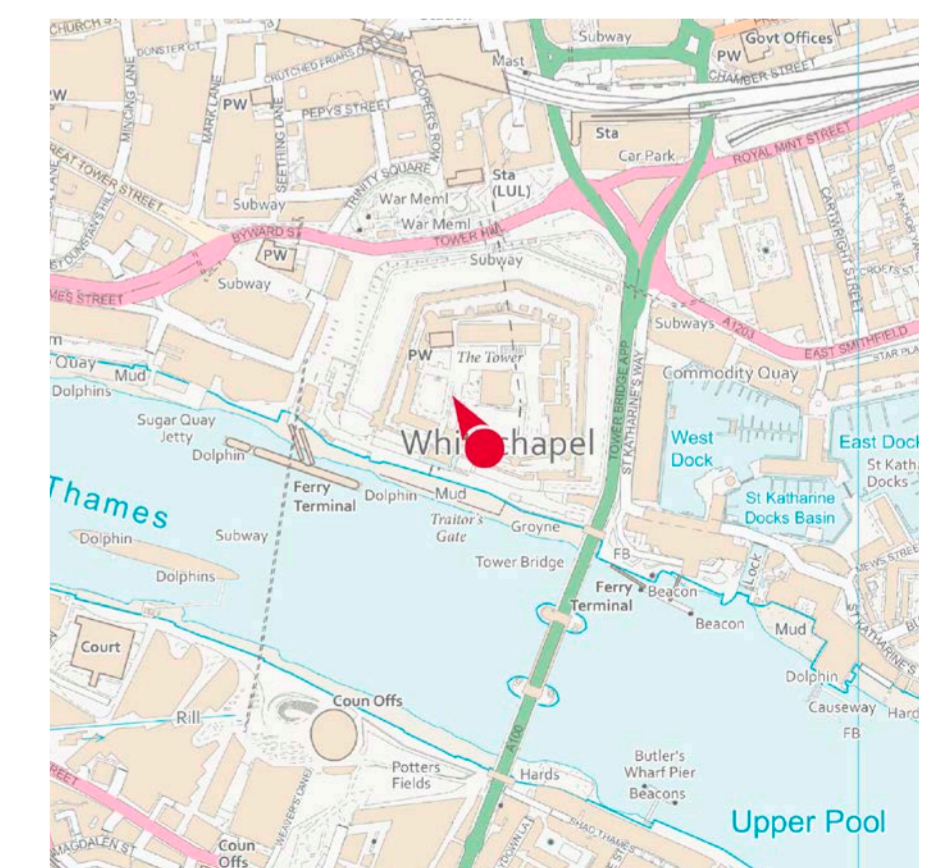
Height of camera 1.60m above ground

Date of photograph 24/03/2022

Time of photograph 10:02

Canon EOS 5D Mark IV DSLR

Lens 24mm



c58 Tower of London: Inner Curtain Wall south



Option B: Stepped envelope including defing contours

View Definition

Authority

Historic Royal Palaces

Policy Document

Tower of London | Local Setting Study [August 2010]

Location Reference

RV4

Camera Location

National Grid Reference 533604.4E 180483.9N

Camera height 13.41m AOD

Looking at The Central Cluster

Bearing 328.6°, distance 0.8km

Photography Details

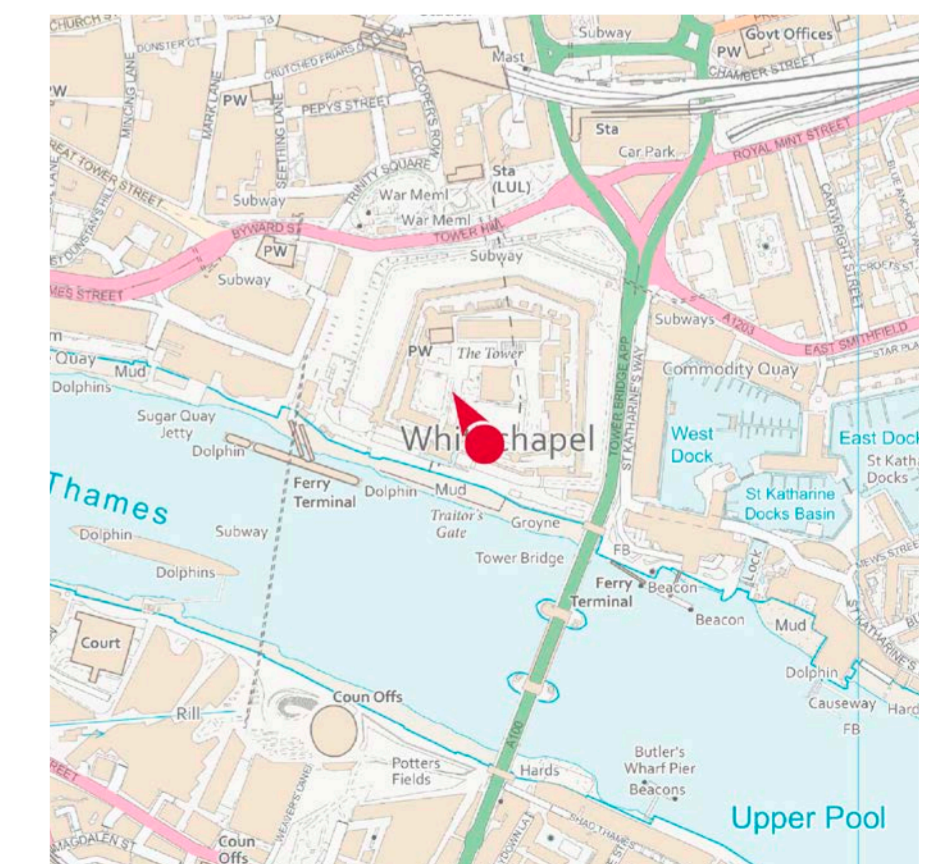
Height of camera 1.60m above ground

Date of photograph 24/03/2022

Time of photograph 10:02

Canon EOS 5D Mark IV DSLR

Lens 24mm



c58 Tower of London: Inner Curtain Wall south



Option B: Smoothed envelope indicating potential outcome from detailed assessment of specific sites

View Definition

Authority

Historic Royal Palaces

Policy Document

Tower of London | Local Setting Study [August 2010]

Location Reference

RV4

Camera Location

National Grid Reference 533604.4E 180483.9N

Camera height 13.41m AOD

Looking at The Central Cluster

Bearing 328.6°, distance 0.8km

Photography Details

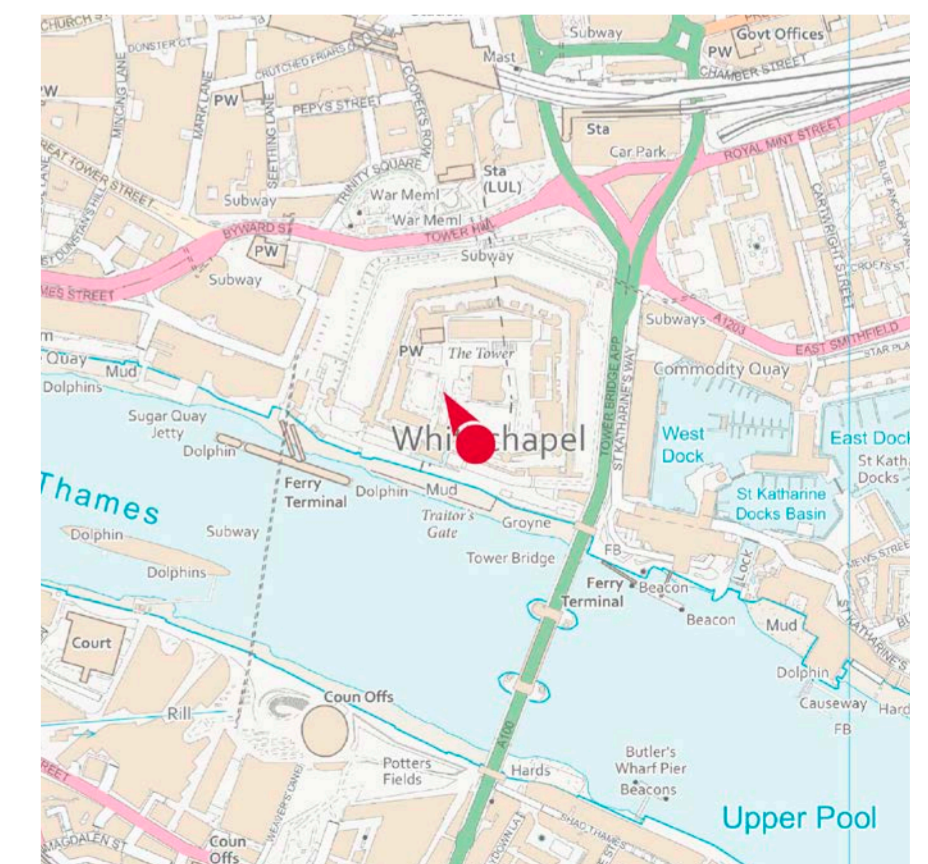
Height of camera 1.60m above ground

Date of photograph 24/03/2022

Time of photograph 10:02

Canon EOS 5D Mark IV DSLR

Lens 24mm



n19 The Monument looking north-west - to St Paul's Cathedral



Existing prospect

View Definition

Authority

City of London

Policy Document

St Paul's Heights Study [April 2015]

Location Reference

V5

Camera Location

National Grid Reference 532921.8E 180762.4N [Estimated]

Camera height 60.99m AOD

Looking at The Central Cluster

Bearing 316.1°, distance 0.6km

Photography Details

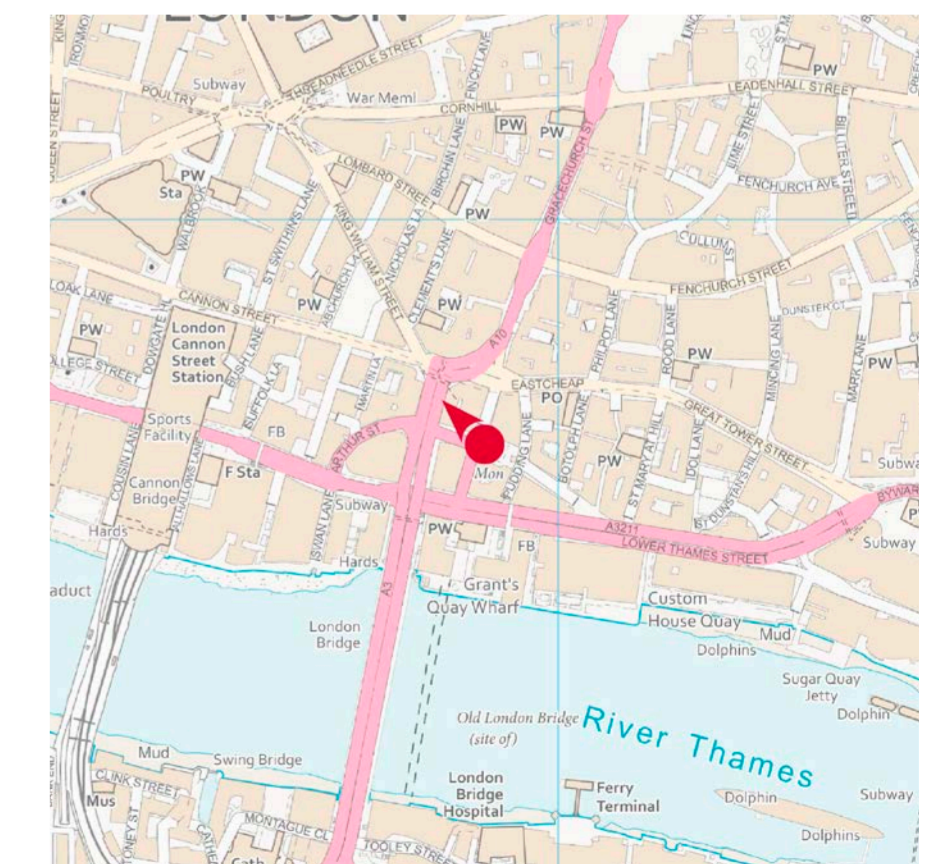
Height of camera 1.60m above ground

Date of photograph 26/04/2022

Time of photograph 10:15

Canon EOS 5D Mark IV DSLR

Lens 24mm



n19 The Monument looking north-west - to St Paul's Cathedral



View Definition

Authority

City of London

Policy Document

St Paul's Heights Study [April 2015]

Location Reference

V5

Camera Location

National Grid Reference 532921.8E 180762.4N [Estimated]

Camera height 60.99m AOD

Looking at The Central Cluster

Bearing 316.1°, distance 0.6km

Photography Details

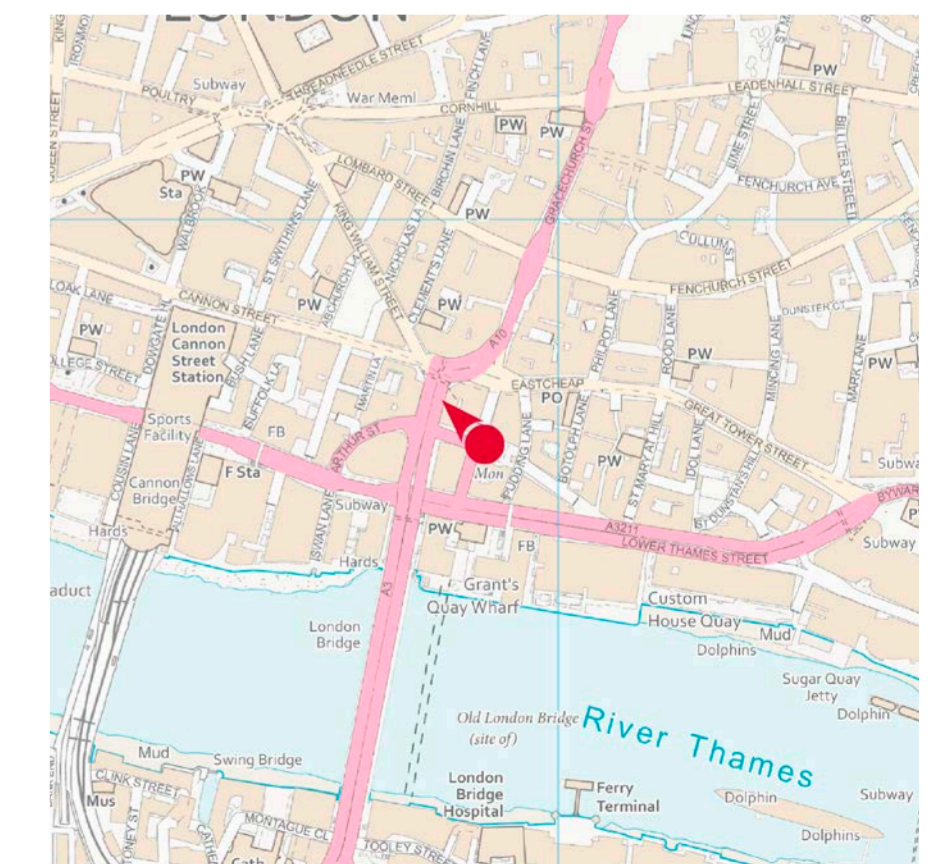
Height of camera 1.60m above ground

Date of photograph 26/04/2022

Time of photograph 10:15

Canon EOS 5D Mark IV DSLR

Lens 24mm



n19 The Monument looking north-west - to St Paul's Cathedral



View Definition

Authority

City of London

Policy Document

St Paul's Heights Study [April 2015]

Location Reference

V5

Camera Location

National Grid Reference 532921.8E 180762.4N [Estimated]

Camera height 60.99m AOD

Looking at The Central Cluster

Bearing 316.1°, distance 0.6km

Photography Details

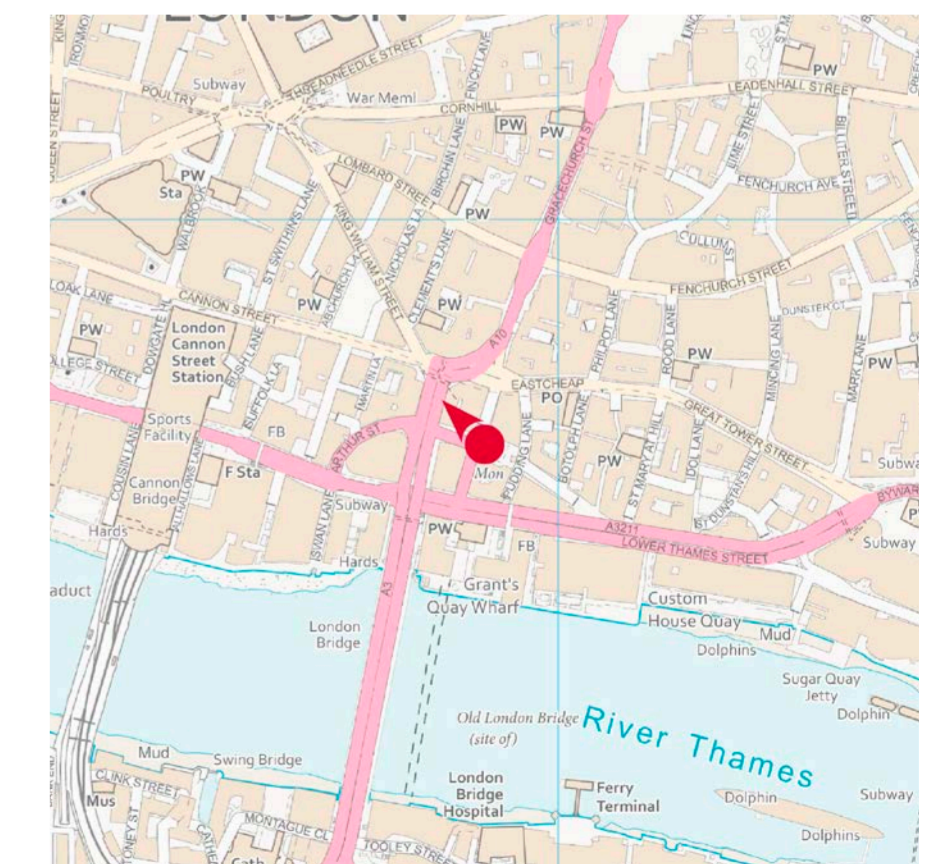
Height of camera 1.60m above ground

Date of photograph 26/04/2022

Time of photograph 10:15

Canon EOS 5D Mark IV DSLR

Lens 24mm



n19 The Monument looking north-west - to St Paul's Cathedral



View Definition

Authority

City of London

Policy Document

St Paul's Heights Study [April 2015]

Location Reference

V5

Camera Location

National Grid Reference 532921.8E 180762.4N [Estimated]

Camera height 60.99m AOD

Looking at The Central Cluster

Bearing 316.1°, distance 0.6km

Photography Details

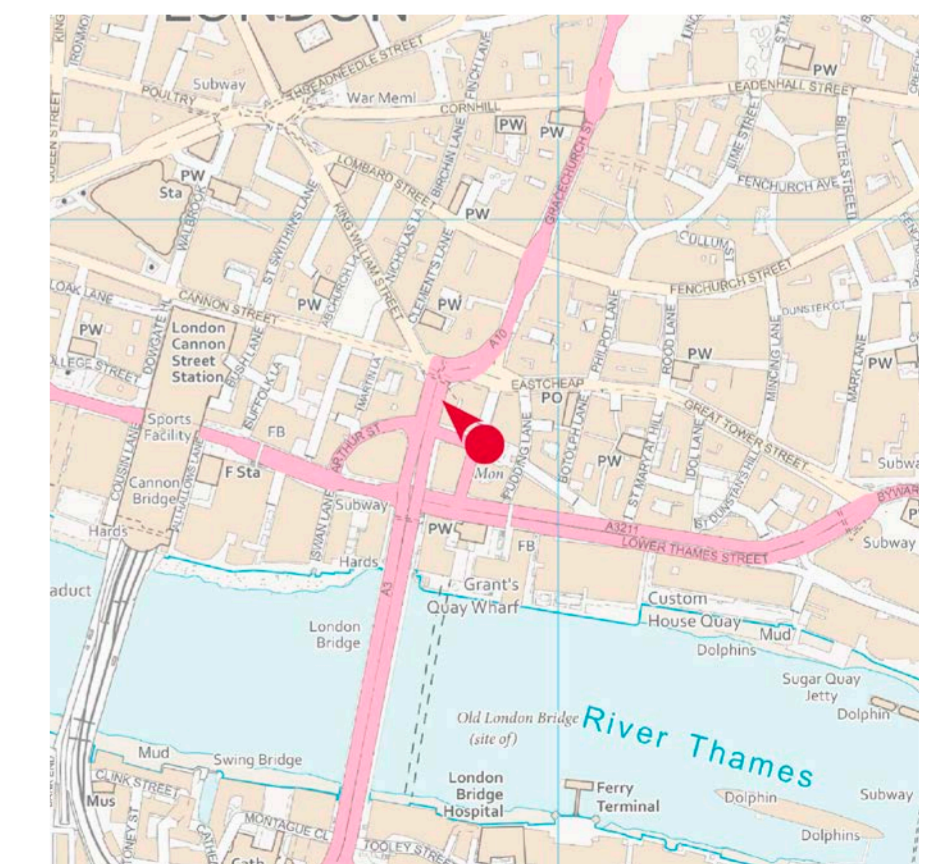
Height of camera 1.60m above ground

Date of photograph 26/04/2022

Time of photograph 10:15

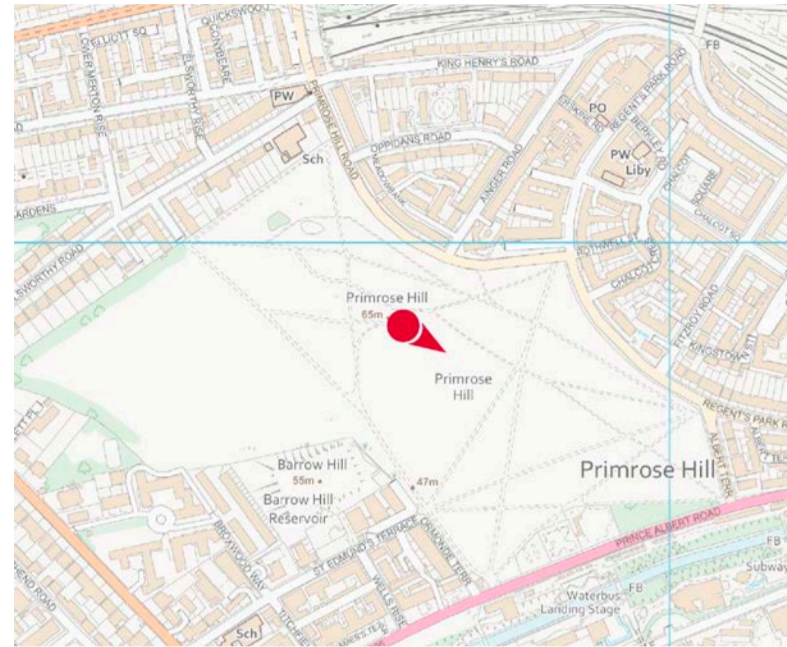
Canon EOS 5D Mark IV DSLR

Lens 24mm



3 View Locations

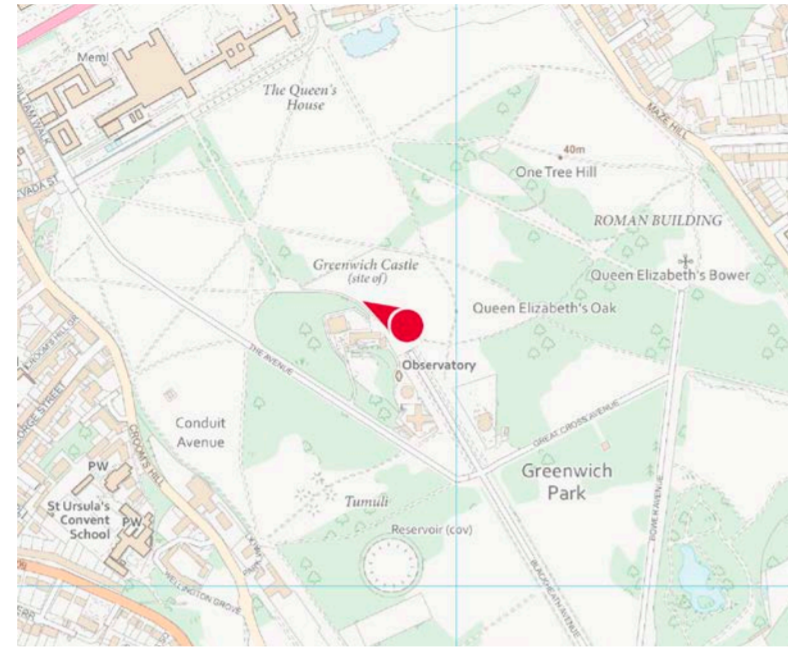
d6 | Primrose Hill: the summit



Camera Location
National Grid Reference 527657.3E 183893.0N
Camera height 68.29m AOD
Looking at The Central Cluster
Bearing 122.1°, distance 6.3km

Photography Details
Height of camera 1.60m above ground
Date of photograph 17/01/2022
Time of photograph 14:46
Canon EOS 5D Mark IV DSLR
Lens 70mm

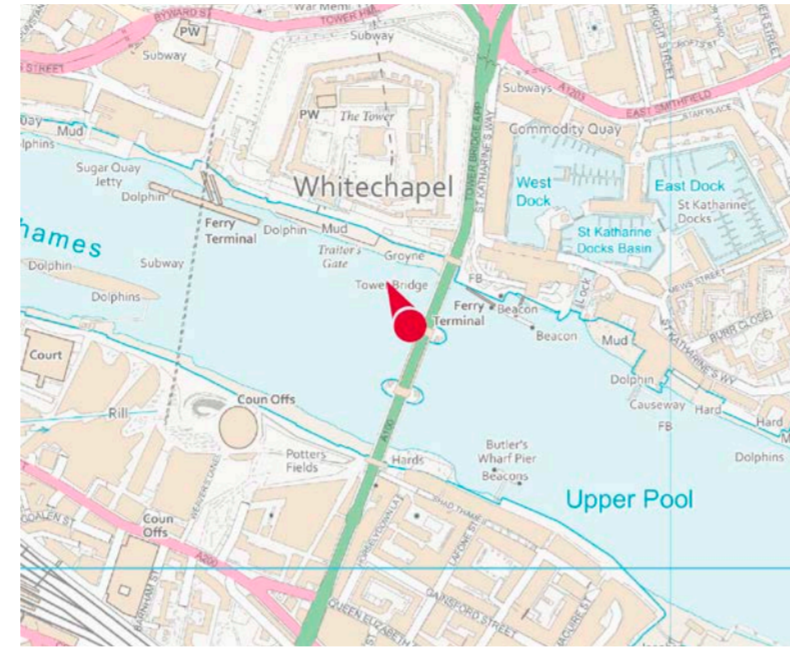
d8 | Greenwich Park: the General Wolfe statue - north-east of the statue



Camera Location
National Grid Reference 538936.1E 177334.5N
Camera height 48.80m AOD
Looking at The Central Cluster
Bearing 298.9°, distance 6.8km

Photography Details
Height of camera 1.60m above ground
Date of photograph 29/07/2022
Time of photograph 14:10
Canon EOS 5D Mark IV DSLR
Lens 70mm

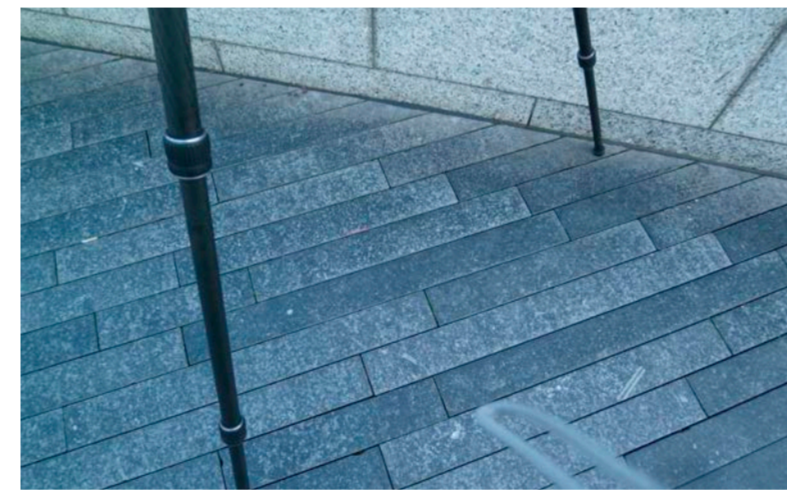
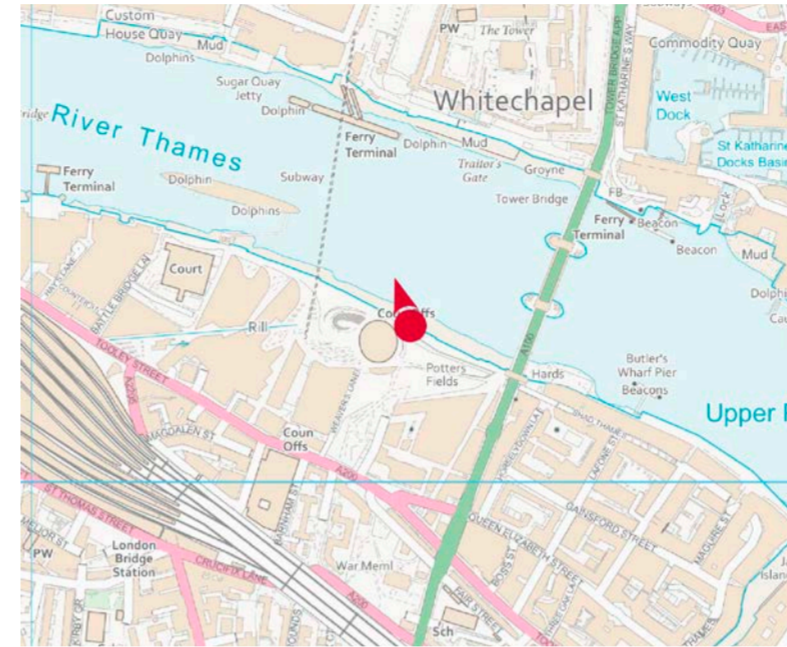
c1 | Tower Bridge: upstream - the north bastion



Camera Location
National Grid Reference 533665.0E 180311.4N
Camera height 14.82m AOD
Looking at The Central Cluster
Bearing 332.4°, distance 1.0km

Photography Details
Height of camera 1.60m above ground
Date of photograph 11/02/2022
Time of photograph 10:59
Canon EOS 5D Mark IV DSLR
Lens 24mm

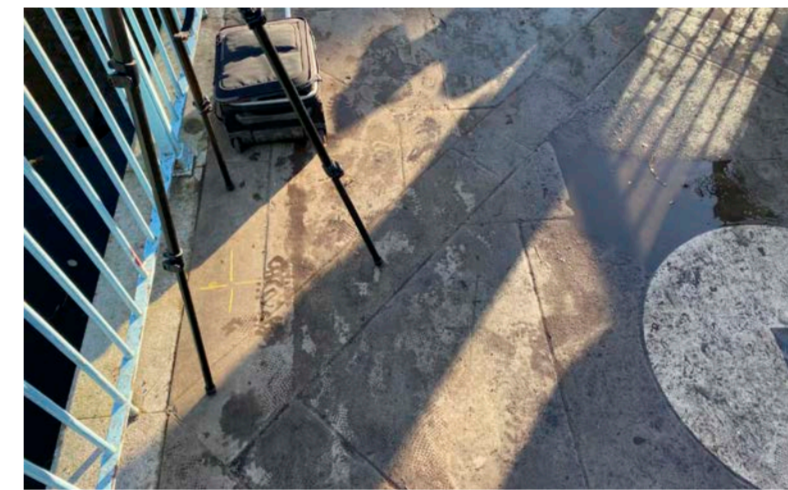
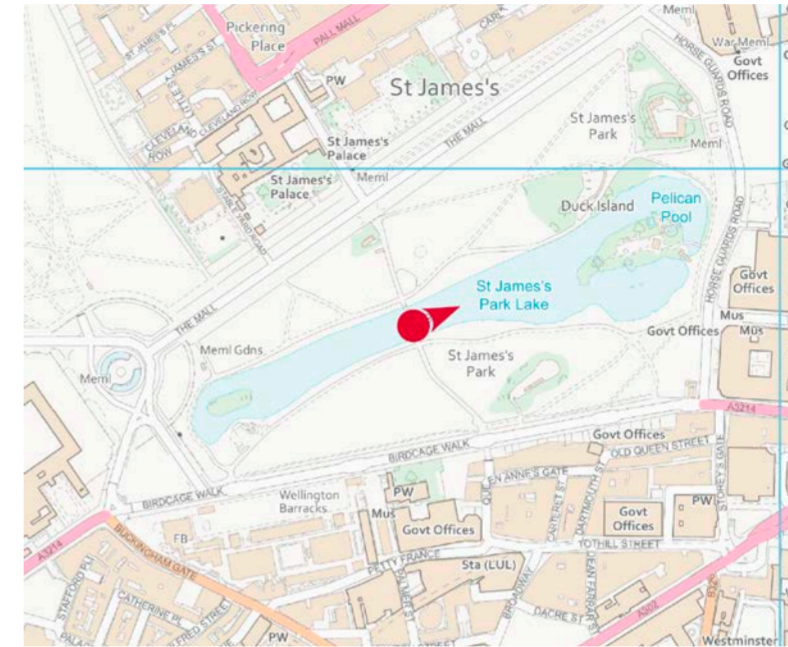
c4 | The Queen's Walk at City Hall - foot of pathway from Potter's Fields



Camera Location
National Grid Reference 533485.7E 180201.1N
Camera height 6.18m AOD
Looking at The Central Cluster
Bearing 342.0°, distance 1.0km

Photography Details
Height of camera 1.60m above ground
Date of photograph 12/03/2020
Time of photograph 10:50
Canon EOS 5D Mark IV DSLR
Lens 24mm

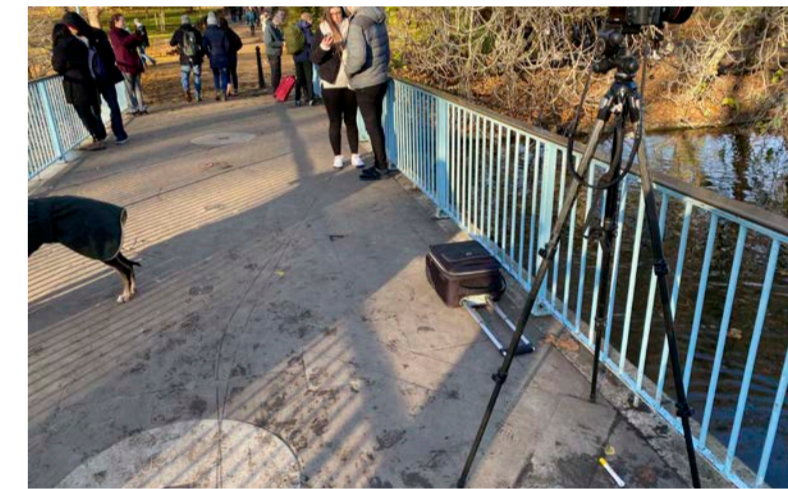
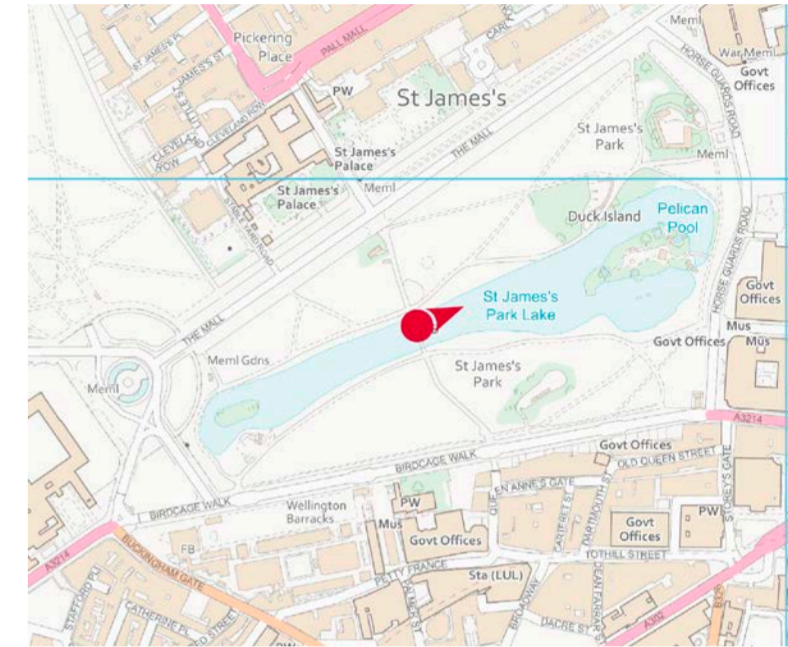
c25 | St James' Park Bridge - at the centre of the bridge | LVMF 26A.1



Camera Location
National Grid Reference 529529.4E 179798.8N
Camera height 4.70m AOD
Looking at The Central Cluster
Bearing 67.5°, distance 4.0km

Photography Details
Height of camera 1.60m above ground
Date of photograph 02/12/2021
Time of photograph 13:09
Canon EOS 5D Mark IV DSLR
Lens 50mm

c26 | St James' Park Bridge - north

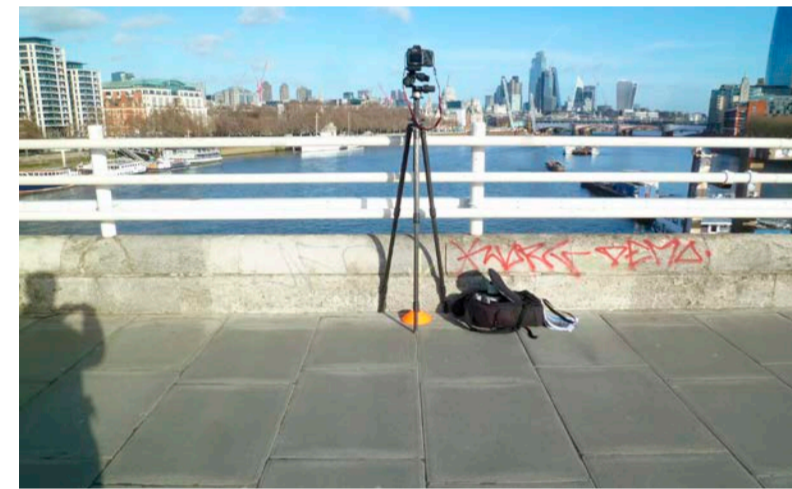


Camera Location
National Grid Reference 529525.0E 179812.3N
Camera height 4.70m AOD
Looking at The Central Cluster
Bearing 67.7°, distance 4.0km

Photography Details
Height of camera 1.60m above ground
Date of photograph 02/12/2021
Time of photograph 13:24
Canon EOS 5D Mark IV DSLR
Lens 50mm

View Locations (continued)

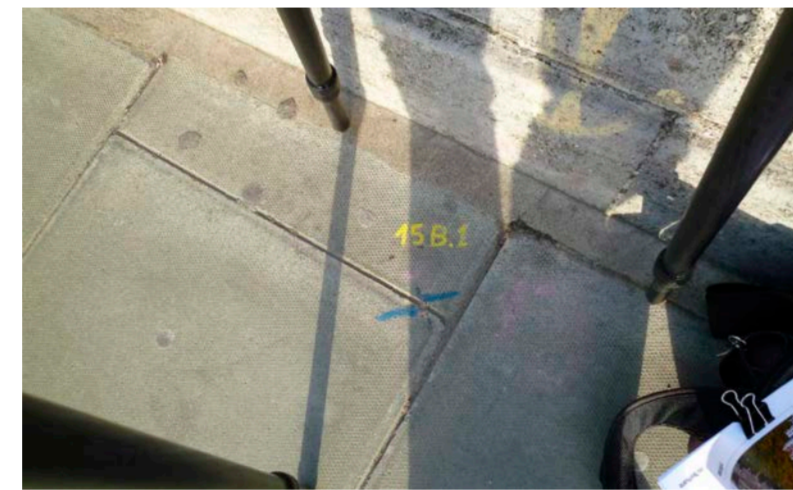
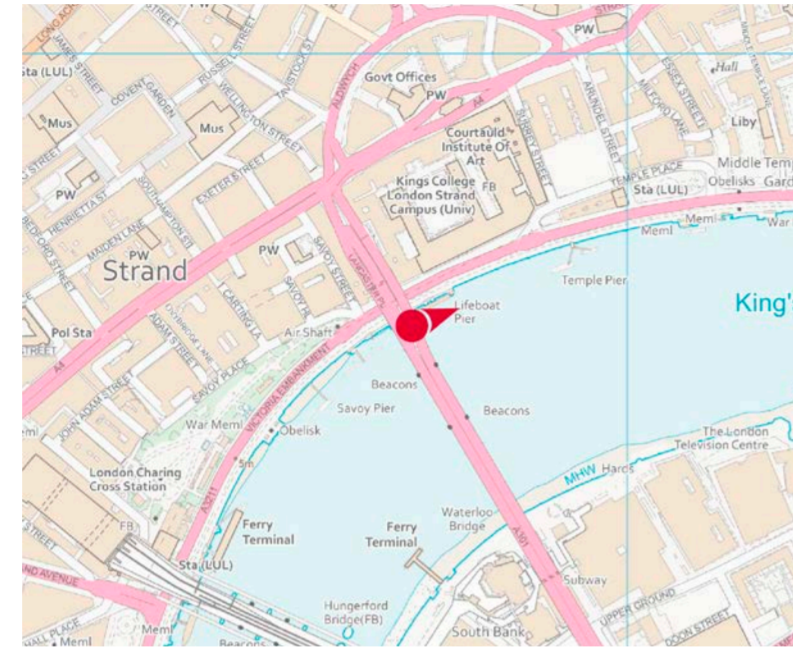
c17/n7 | Waterloo Bridge: downstream - at the centre of the bridge



Camera Location
National Grid Reference 530792.2E 180535.6N
Camera height 16.61m AOD
Looking at The Central Cluster
Bearing 64.5°, distance 2.6km

Photography Details
Height of camera 1.60m above ground
Date of photograph 30/01/2023
Time of photograph 14:11
Canon EOS 5D Mark IV DSLR
Lens 50mm

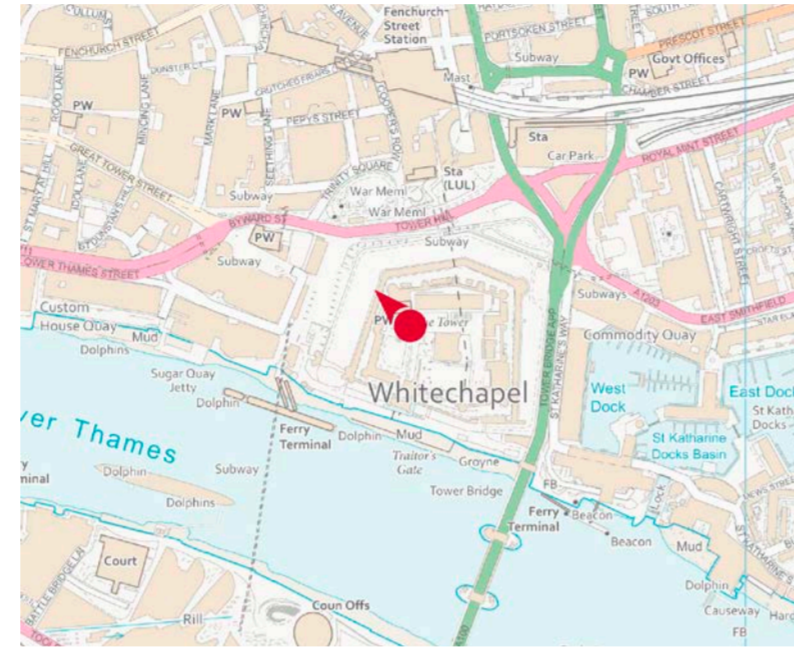
c18/n8 | Waterloo Bridge: downstream - close to the Westminster bank



Camera Location
National Grid Reference 530723.6E 180651.2N
Camera height 16.44m AOD
Looking at The Central Cluster
Bearing 69.7°, distance 2.6km

Photography Details
Height of camera 1.60m above ground
Date of photograph 30/01/2023
Time of photograph 14:34
Canon EOS 5D Mark IV DSLR
Lens 50mm

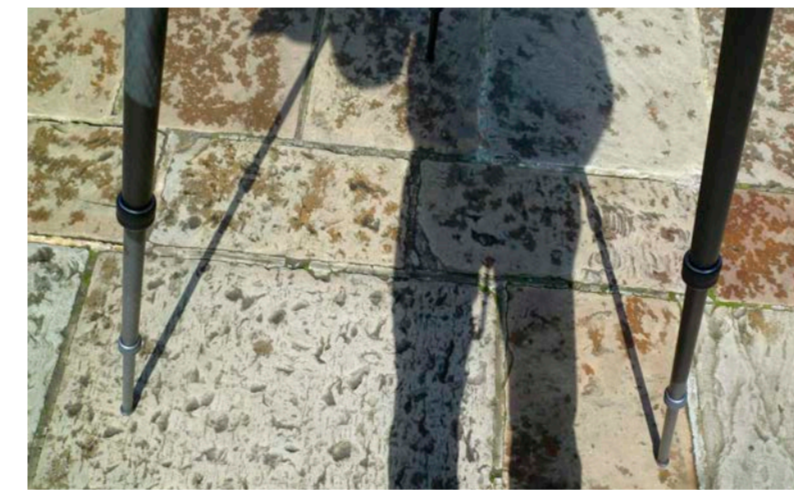
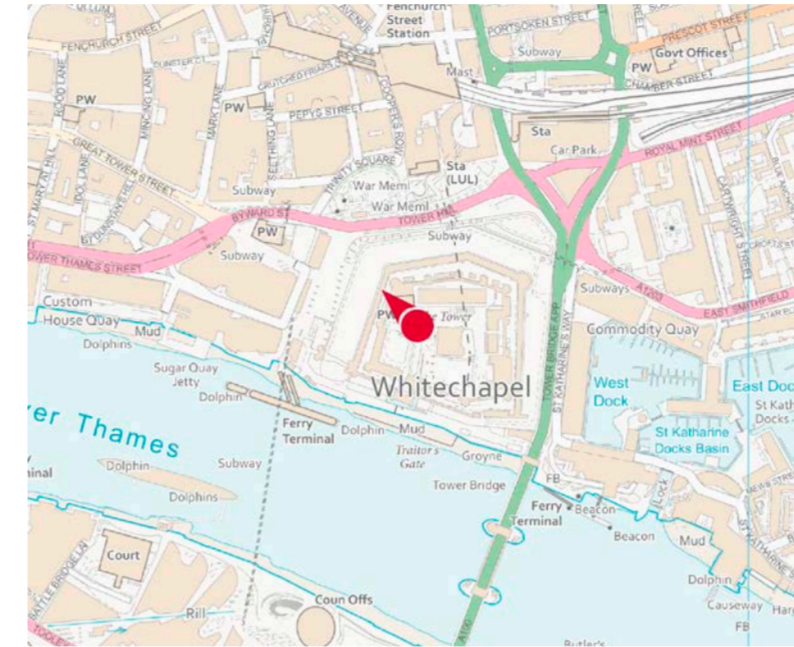
c49 | Tower of London: Inner Ward - Site of the Scaffold



Camera Location
National Grid Reference 533569.3E 180575.6N
Camera height 12.37m AOD
Looking at The Central Cluster
Bearing 315.3°, distance 0.7km

Photography Details
Height of camera 1.60m above ground
Date of photograph 14/01/2022
Time of photograph 10:40
Canon EOS 5D Mark IV DSLR
Lens 24mm

c50 | Tower of London: Inner Ward - west of the White Tower



Camera Location
National Grid Reference 533574.9E 180568.1N
Camera height 12.15m AOD
Looking at The Central Cluster
Bearing 315.3°, distance 0.7km

Photography Details
Height of camera 1.60m above ground
Date of photograph 12/03/2020
Time of photograph 12:16
Canon EOS 5D Mark IV DSLR
Lens 24mm

c51 | Tower of London: Inner Ward - west of the White Tower



Camera Location
National Grid Reference 533587.0E 180564.9N
Camera height 12.23m AOD
Looking at The Central Cluster
Bearing 305.8°, distance 0.7km

Photography Details
Height of camera 1.60m above ground
Date of photograph 24/03/2022
Time of photograph 09:14
Canon EOS 5D Mark IV DSLR
Lens 24mm

c52 | Tower of London: Inner Ward - at north-west corner of the White Tower

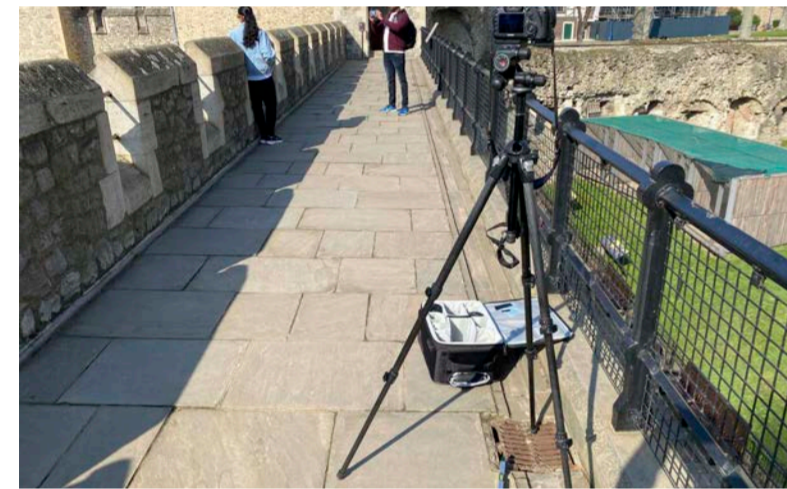
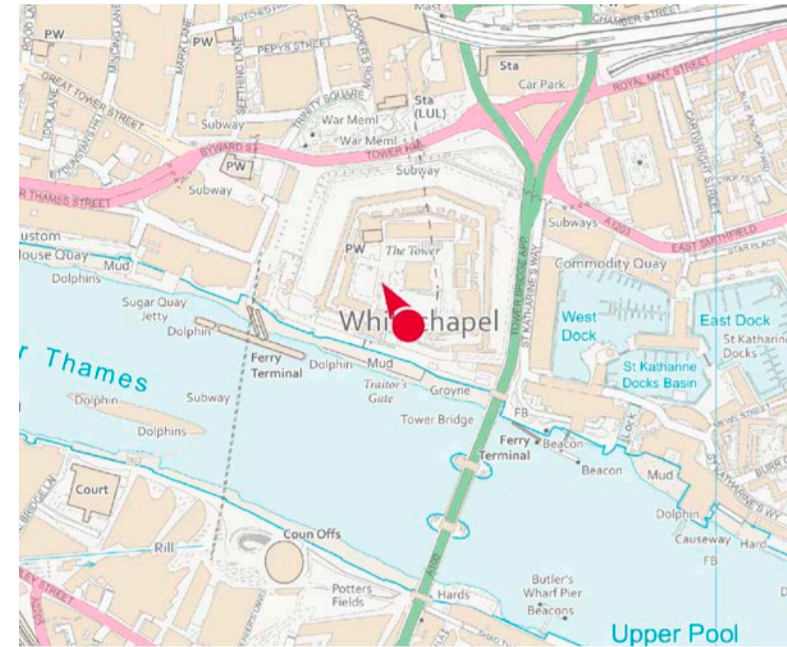


Camera Location
National Grid Reference 533589.1E 180570.6N
Camera height 12.50m AOD
Looking at The Central Cluster
Bearing 307.7°, distance 0.7km

Photography Details
Height of camera 1.60m above ground
Date of photograph 12/03/2020
Time of photograph 12:19
Canon EOS 5D Mark IV DSLR
Lens 24mm

View Locations (continued)

c58 | Tower of London: Inner Curtain Wall south



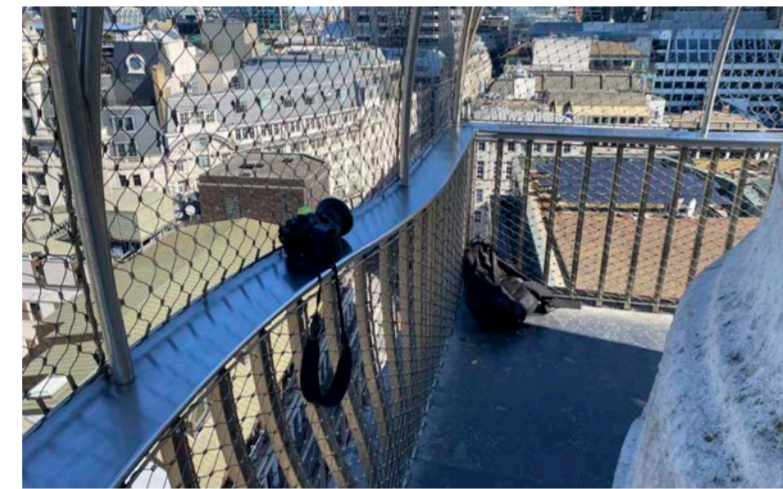
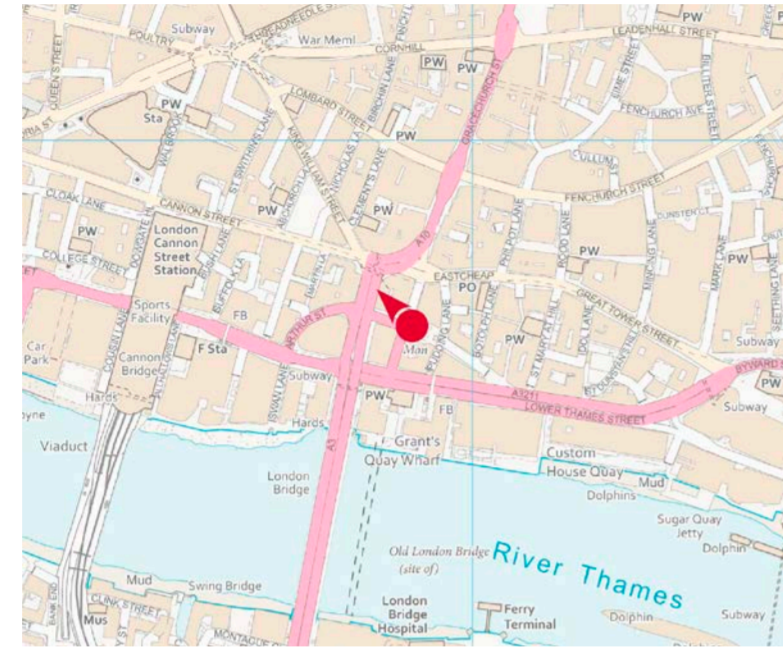
Camera Location

National Grid Reference 533604.4E 180483.9N
 Camera height 13.41m AOD
 Looking at The Central Cluster
 Bearing 328.6°, distance 0.8km

Photography Details

Height of camera 1.60m above ground
 Date of photograph 24/03/2022
 Time of photograph 10:02
 Canon EOS 5D Mark IV DSLR
 Lens 24mm

n19 | The Monument looking north-west - to St Paul's Cathedral



Camera Location

National Grid Reference 532921.8E 180762.4N [Estimated]
 Camera height 60.99m AOD
 Looking at The Central Cluster
 Bearing 316.1°, distance 0.6km

Photography Details

Height of camera 1.60m above ground
 Date of photograph 26/04/2022
 Time of photograph 10:15
 Canon EOS 5D Mark IV DSLR
 Lens 24mm



Miller Hare Limited
Mappin House
4 Winsley Street
London W1W 8HF

+44 20 7691 1000
info@millerhare.com

m:lerhare