



City of London Annual CIL Rate Summary 2024

In accordance with Regulation 121C of the Community Infrastructure Levy (CIL) Regulations 2010 (as amended), the City of London (as a CIL Charging Authority) is issuing this Annual CIL Rate Summary effective from 1 January 2024 until 31 December 2024.

The Community Infrastructure Levy (CIL) is subject to indexation which allows the rates to be adjusted to reflect inflation (from the year the CIL Charging Schedule was adopted to the year planning permission was granted). The City of London's CIL Charging Schedule was adopted on 1 July 2014. The BCIS Index applicable for the year 2014 is 239.

For planning permissions granted in the year 2024, the [RICS CIL Index](#) to be applied is 381.

For planning permissions granted in the year 2023, the [RICS CIL Index](#) to be applied is 355.

For planning permissions granted in the year 2022, the [RICS CIL Index](#) to be applied is 332.

For planning permissions granted in the year 2021, the [RICS CIL Index](#) to be applied is 333.

For planning permissions granted in the year 2020, the [RICS CIL Index](#) to be applied is 334.

City of London has three CIL Charging Zones as follows (mapped in Figure 1 below):

Riverside: In relation to Residential Use

Rest of City: In relation to Residential Use

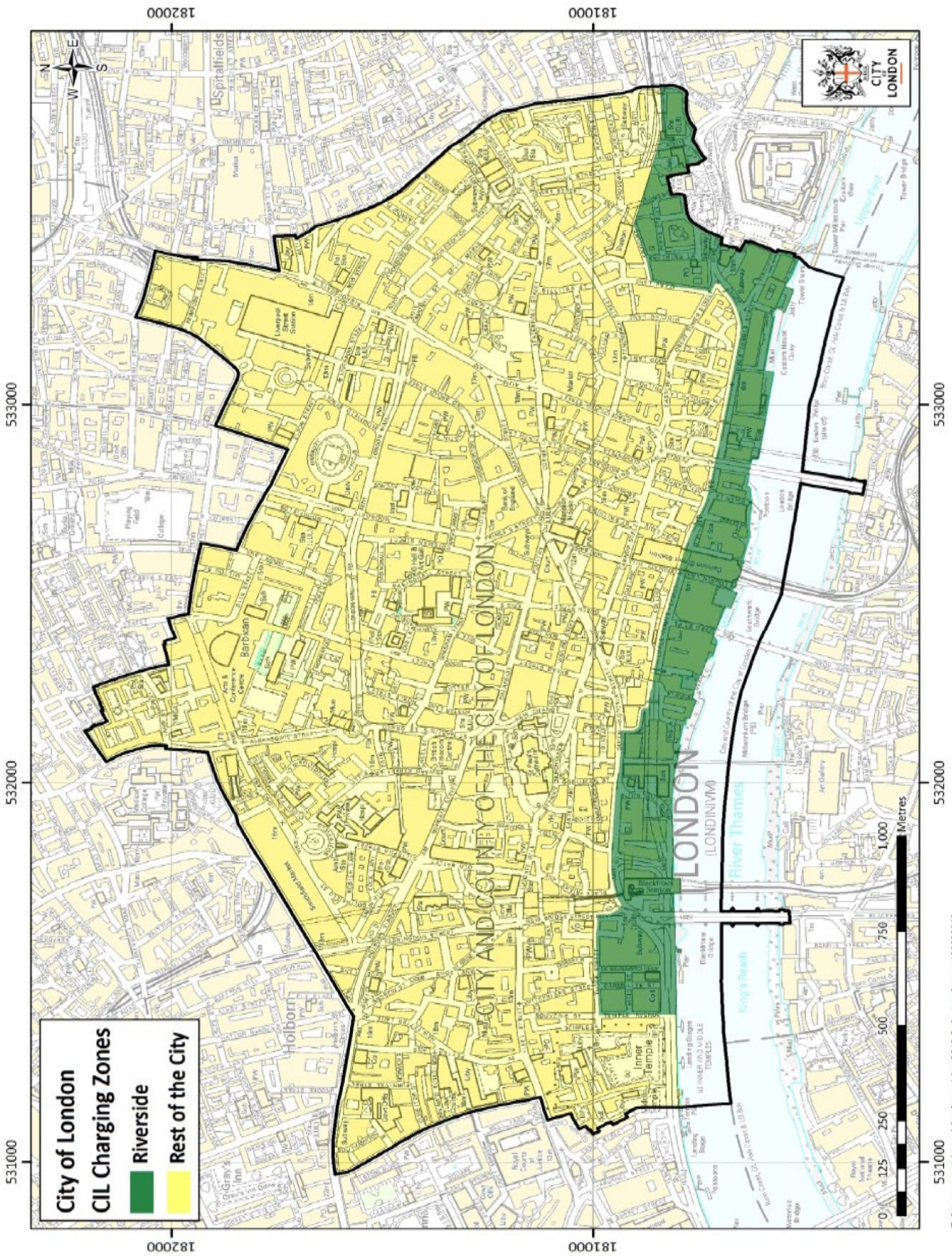
City-wide: In relation to all other Uses

City of London indexed CIL rates for 2020 to 2024 are as follows:

Land Use	Zone	City CIL Rate (£ per m2)	Indexed CIL Rate 2020 (£ per m2)	Indexed CIL Rate 2021 (£ per m2)	Indexed CIL Rate 2022 (£ per m2)	Indexed CIL Rate 2023 (£ per m2)	Indexed CIL Rate 2024 (£ per m2)
Offices	City-wide	£75	£104.81	£104.50	£104.18	£111.40	£119.56
Residential	Riverside	£150	£209.62	£209.00	£208.37	£222.80	£239.12
Residential	Rest of City	£95	£132.76	£132.36	£131.97	£141.11	£151.44
Development used wholly or mainly for the provision of medical or health services, except the use of premises attached to the residence of the consultant or practitioner	City-wide	Nil	Nil	Nil	Nil	Nil	Nil
Development used wholly or mainly for the provision of education as a school or college under the Education Acts or as an institution of higher education	City-wide	Nil	Nil	Nil	Nil	Nil	Nil
Development used wholly or mainly for the operational purposes of the emergency services	City-wide	Nil	Nil	Nil	Nil	Nil	Nil
All other uses	City-wide	£75	£104.81	£104.50	£104.18	£111.40	£119.56

In accordance with Regulation 14 of the Community Infrastructure Levy Regulations 2010 (as amended by the Community Infrastructure Levy Regulations 2011), the City of London is designated as a 'Collecting Authority' for the Mayor of London CIL. Further information on the Mayor of London's Charing Schedule and Annual CIL Rate Summary can be found here: [MCIL Charging Schedule & Annual CIL Rate Summary](#)

Figure 1: City CIL Charging Zones



© Crown copyright and database rights 2013 Ordnance Survey. 10003243.