

Local Plan Monitoring Report

Open Spaces and Recreation

City of London

Local Plan Core Strategic Policy CS19: Open Spaces and Recreation

Period Ending: 31st March 2021



Published by the Environment Department

December 2021



Contents

Executive Summary	4
1. Policy Context	5
2. Purpose of this Report.....	6
3. Open Space Delivery in the City of London.....	7
Introduction	7
Total Open Space	7
Open Space Completions (2011/12 to 2020/21)	8
Protection and Replacement of Open Space	10
New Publicly Accessible Open Space and Pedestrian Routes	10
City Public Realm Projects.....	11
4. Projected Open Space Delivery (2021/22 to 2025/26).....	13
Projected Open Space Completions	13
Protection and Replacement of Open Space	13
Publicly Accessible Open Spaces and Pedestrian Routes	14
City Public Realm Projects.....	14
5. Inclusive Access to Open Space.....	15
Introduction	15
Delivery of Accessible Open Spaces (2011/12 to 2020/21).....	15
Improvements to Existing Open Spaces (2011/12 to 2020/21)	15
Projected Open Space (2021/22 to 2025/26)	16
6. Biodiversity, Children’s Play, and Outdoor Sports.....	17
Introduction	17
Sites of Importance for Nature Conservation (SINCs)	17
Wildlife Habitats and Trees.....	17

Local Plan Monitoring Report – Open Spaces and Recreation

Children’s Play, and Outdoor Sports.....	18
Appendices	20
Appendix 1: Open Space Losses and Gains (2011/12 to 2025/26)	20
Appendix 2: Open Space Losses (2011/12 to 2020/21)	21
Appendix 3: Open Space Gains (2011/12 to 2020/21).....	24
Appendix 4: Projected Open Space Losses (2021/22 to 2025/26).....	34
Appendix 5: Projected Open Space Gains (2021/22 to 2025/26)	36
Information	41

Executive Summary

Between 2011/12 and 2020/21, the total open space in the City of London increased from 32.22 hectares (322,200m²) to 34.24 hectares (342,400m²).

The most significant increases in open space were:

- 0.82 hectares (8,200m²) during 2017/18;
- 0.69 hectares (6,900m²) during 2018/19; and
- 0.47 hectares (4,700m²) during 2020/21.

New open space provision in the City of London included:

- Replacement of open space lost due to redevelopment works;
- Previously inaccessible sites opened to the public; and
- City public realm projects, providing open space on underused street space.

Between 2021/22 and 2025/26, the total open space is projected to increase to 35.75 hectares (357,500m²).

Open spaces in the City of London have provided inclusive access through:

- New development works, and
- Enhancement to existing sites.

As at 31st March 2021, the City of London contained 10 Sites of Importance for Nature Conservation (SINCs). This included Finsbury Circus Gardens, where the gardens were reopened during 2020/21 upon completion of works relating to the Elizabeth line (Crossrail).

New open spaces in the City of London provide wildlife habitats, including flowers, green walls and trees.

Between 2011/12 and 2020/21, there was a small net loss of 0.02 hectares (200m²) of outdoor play and sports facilities.

1. Policy Context

The City of London [Local Plan](#) **Core Strategic Policy CS19 (Open Spaces and Recreation)** sets out policy requirements:

To encourage healthy lifestyles for all the City's communities through improved access to open space and facilities, increasing the amount and quality of open spaces and green infrastructure, while enhancing biodiversity, by:

1. Seeking to maintain a ratio of at least 0.06 hectares of high quality, publicly accessible open space per 1,000 weekday daytime population;
 - (i) protecting existing open space, particularly that of historic interest, or ensuring that it is replaced on redevelopment by space of equal or improved quantity and quality on or near the site;
 - (ii) securing public access, where possible, to existing private spaces;
 - (iii) securing additional publicly accessible open space and pedestrian routes, where practical, particularly in the eastern part of the City;
 - (iv) creating additional civic spaces from underused highways and other land where this would not conflict with other strategic objectives;
 - (v) encouraging high quality green roofs, roof gardens and terraces, particularly those which are publicly accessible, subject to the impact on the amenity of adjacent occupiers.
2. Improving access to new and existing open spaces, including those in neighbouring boroughs, promoting public transport access to nearby open space outside the City and ensuring that open spaces meet the needs of all the City's communities.
3. Increasing the biodiversity value of open spaces, paying particular attention to sites of importance for nature conservation such as the River Thames. Protecting the amenity value of trees and retaining and planting more trees wherever practicable.
4. Improving inclusion and access to affordable sport, play and recreation, protecting and enhancing existing facilities and encouraging the provision of further facilities within major developments.

Sustainability Objectives:

- Maintain and enhance biodiversity, and
- Ensure that the City is a safe and pleasant place to live and work.

2. Purpose of this Report

The City of London is relatively small in the context of the [London Plan](#) public open space categorisation¹, there are limited opportunities to provide additional open space within a dense urban environment.

The City of London [Open Spaces and Recreation Audit](#) analyses the spatial distribution of **open spaces** in the City of London.

This report monitors the how City of London **Local Plan Policy CS19** is implemented, setting out:

- Changes to the City of London’s open space and outdoor recreation facilities between 2011/12 and 2020/21², and
- An assessment of projected policy implementation between 2021/22 and 2025/26.

The report analyses:

- Changes to the total open space between 2011/12 and 2020/21 (**Section 3**);
- Projected changes to the total open space between 2021/22 and 2025/26 (**Section 4**);
- Access to open space (**Section 5**);
- Biodiversity, and facilities for children’s play, and outdoor sports (**Section 6**) and
- Detailed statistics (**the Appendix**):
 - **Appendix 1** summarises changes to the total open space, and
 - **Appendices 2 to 5** provide details of open space losses and gains between 2011/12 and 2020/21, and projections between 2021/22 and 2025/26.

¹ The **Open Spaces and Recreation Audit** sets this out.

² This report refers to financial years, e.g., ‘2020/21’ refers to the period 1st April 2020 to 31st March 2021.

3. Open Space Delivery in the City of London

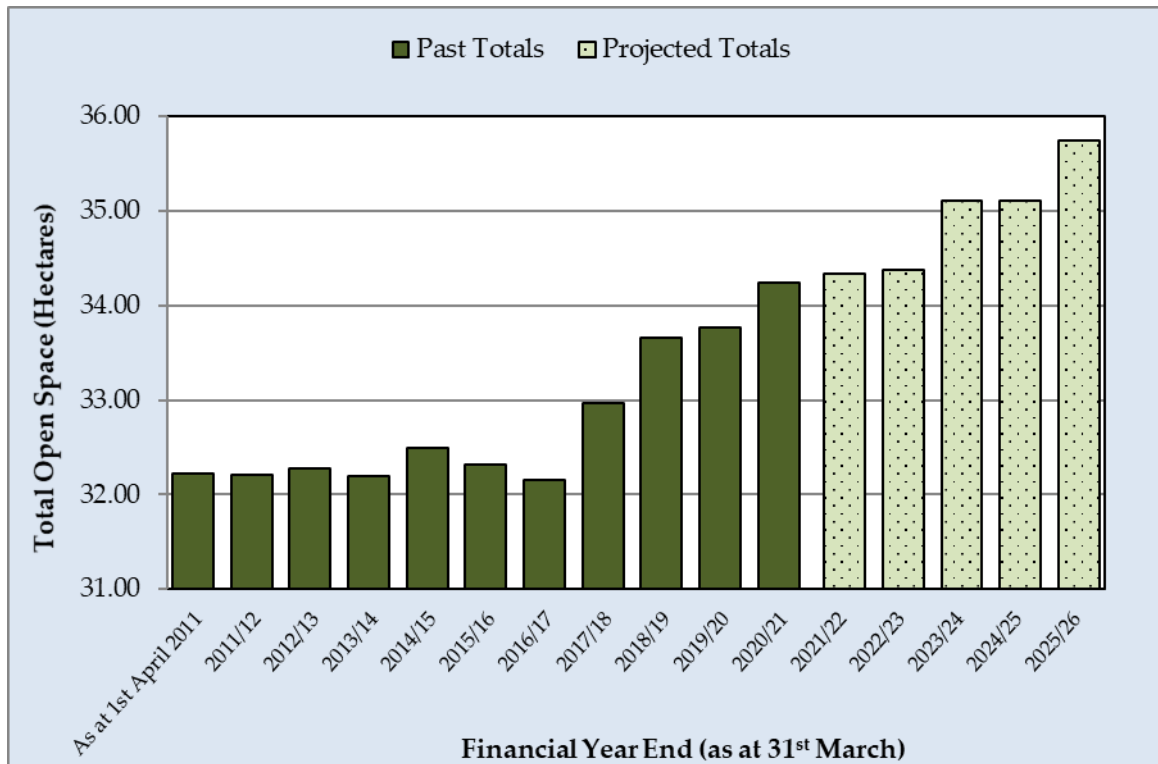
Introduction

The City Corporation developed the **Open Spaces and Recreation Audit** dataset in 2002; this has evolved to evaluate how open space contributes to the City’s environment. The City Corporation updates information annually, based on two prime information sources:

1. Monitoring of [development](#), and
2. [Public realm enhancement](#) projects, where open space is provided on underused highway land.

Total Open Space

Graph 1 summarises changes to total open space between 2011/12 and 2020/21, and the projected delivery of new open space between 2021/22 and 2025/26.



Graph 1: Total Open Space in the City of London (2011/12 to 2025/26)

Between 2011/12 and 2020/21, the total open space in the City of London increased from 32.22 hectares (322,200m²) to 34.24 hectares (342,400m²).

Most new open spaces comprised³:

- **Primary civic spaces**, which include civic and market squares and other surfaces designed for pedestrians, with open space amenity, and
- **Secondary civic spaces**, which include pedestrian movement facilities with open space amenity.

Open Space Completions (2011/12 to 2020/21)

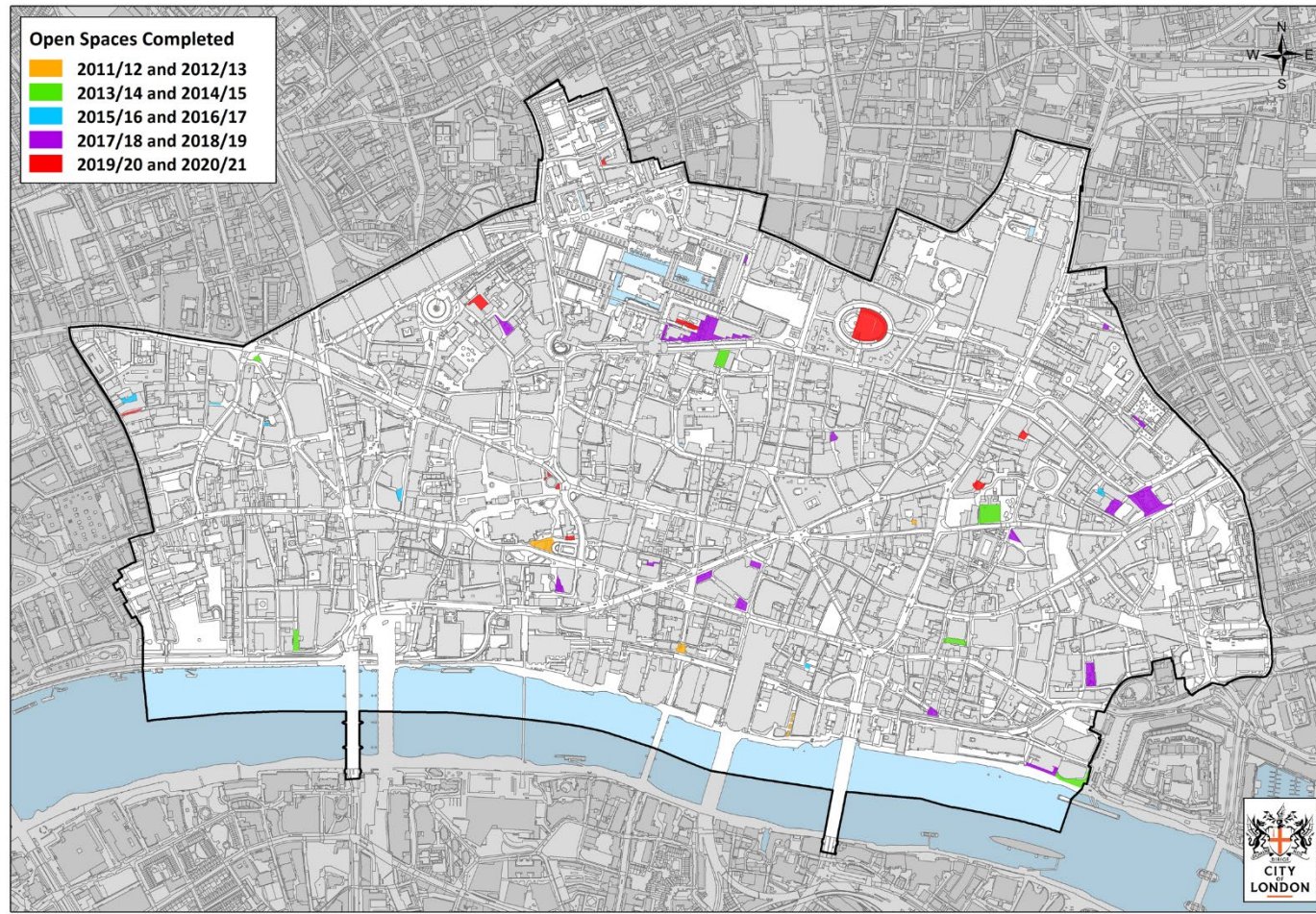
Between 2011/12 and 2020/21, a range of open spaces were completed, or reopened following temporary closure, while others were closed permanently or temporarily. There were variations in the net total completions throughout the monitoring period:

- Between 2011/12 and 2013/14, there were relatively minor changes in the total open space (losses and gains of less than 0.1 hectares, or 1,000m²);
- During 2014/15, a range of major redevelopment schemes were completed, resulting in a larger net increase in open space (0.3 hectares, or 3,000m²);
- During subsequent financial years, there were net losses in open space, following the commencement of redevelopment schemes:
 - 0.18 hectares (1,800m²) during 2015/16, and
 - 0.16 hectares (1,600m²) during 2016/17.
- In more recent years, there were more significant net increases in open space:
 - 0.82 hectares (8,200m²) during 2017/18;
 - 0.69 hectares (6,900m²) during 2018/19;
 - Just 0.11 hectares (1,100m²) during 2019/20, and
 - 0.47 hectares (4,700m²) during 2020/21, primarily due to the reopening of Finsbury Circus Gardens.

Map 1 illustrates the spatial distribution of new open spaces, completed between 2011/12 and 2020/21.

³ The City of London **Open Spaces and Recreation Audit** sets out all open space **typologies**.

Local Plan Monitoring Report – Open Spaces and Recreation



Map 1: Open Space Completions by Year in the City of London (2011/12 to 2020/21)

Protection and Replacement of Open Space

A key requirement of the City of London **Local Plan Policy CS19 (Open Spaces and Recreation)** is to protect existing open space and ensure the replacement of any open space that is lost due to redevelopment works.

Examples of where new open space has been delivered include Mitre Square and London Wall Place (**Picture 1**). Both schemes have provided enhanced open space amenity with improved access, landscaping and seating facilities.

A large area of Finsbury Circus Gardens (**Picture 2**) was closed while Elizabeth Line (Crossrail) excavations took place; the garden was fully reopened during 2020/21.



Picture 1: London Wall Place



Picture 2: Finsbury Circus Gardens

As well as protecting and enhancing open space, and ensuring its replacement, several redevelopment schemes in the City of London have provided new open space on previously inaccessible sites. Most new sites have been situated on pedestrian routes; examples include:

- Lime Street Square;
- Public realm at Clerks Place;
- An enhanced open space adjacent to the Queen Elizabeth II Wing, St. Bartholomew's Hospital, Little Britain; this previously had no public access;
- A new open space at Crosby Square (**Picture 3**) and

Local Plan Monitoring Report – Open Spaces and Recreation

- A new public open space at Viscount Street (**Picture 4**) which replaced a private open space at the demolished Police Section House at 43 Golden Lane.



Picture 3: Crosby Square



Picture 4: Viscount Street

City Public Realm Projects

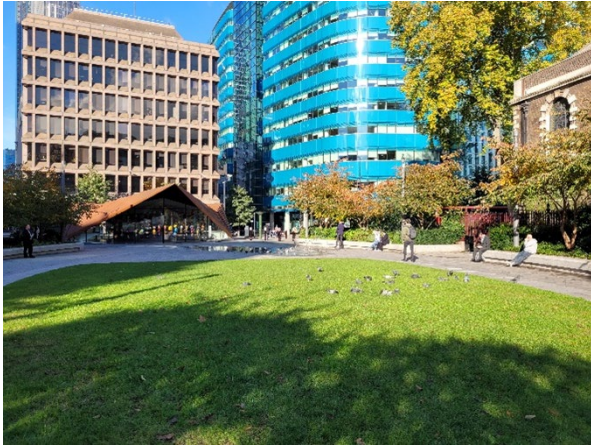
Between 2011/12 and 2020/21, a range of **public realm enhancement** projects created open space on the City of London's underutilised highways. Although these schemes are normally small in scale, they provide valuable public open space amenity in the context of a dense historic inner-city environment. This includes pedestrianisation of street space previously used by vehicular traffic, and installation of seating and other street furniture; examples include:

- A safe public space, with seating and lighting, at John Carpenter Street;
- Tree planting and seating at Plough Place;
- Public space and seating at Middlesex Street;

[area enhancement strategy](#);

- New community space at Artizan Street on land previously occupied by a disused vehicular access ramp;
- Upgraded open space, with seating and trees, at Bartholomew Close;
- Enhanced open space at St. Alphage Gardens (**Picture 7**);
- Public realm at Cursitor Street, and
- Green space at New Change (**Picture 8**).

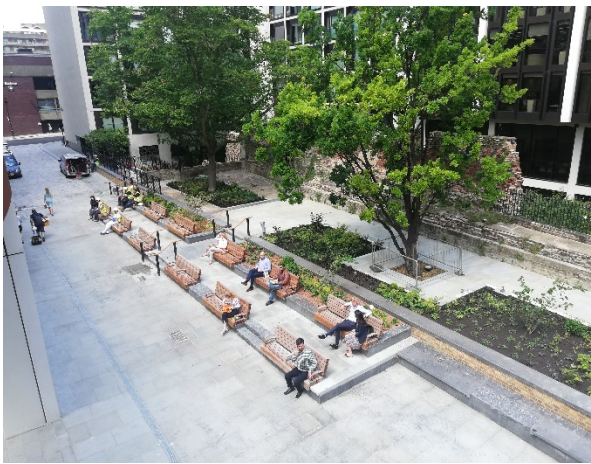
Local Plan Monitoring Report – Open Spaces and Recreation



Picture 5: Aldgate Square



Picture 6: Monument Street



Picture 7: St. Alphage Gardens



Picture 8: New Change

4. Projected Open Space Delivery (2021/22 to 2025/26)

Projected Open Space Completions

Open space delivery projections are based on information available from **planning permissions** and **public realm area enhancement strategies**, which set out the proposed new open space in project plans.

As **Graph 1** (see **Section 3**) shows, between 2021/22 and 2025/26, there is projected to be an increase in the total open space:

- Net changes to open space between 2021/22 and 2022/23 are projected to be low (losses and gains of less than 0.1 hectares, or 1,000m²) and
- Subsequent to this, larger net increases are projected, following the completion of major redevelopment schemes:
 - 0.73 hectares (7,300m²) during 2023/24, and
 - 0.64 hectares (6,400m²) during 2025/26.

As at 31st March 2026, the total open space in the City of London is projected to be 35.75 hectares (357,500m²).

Protection and Replacement of Open Space

Several redevelopment schemes in the pipeline are projected to provide new open spaces, replacing sites lost as a result of construction works. Examples include:

- Aldgate Bus Station, where the piazza at Aldgate High Street was closed during 2020/21; this will be replaced by a larger open space, with improved access;
- An urban square, covered piazza and linear garden at 21 Moorfields, replacing the demolished open space at Moorfields Highwalk; and
- Public access space at Harp Alley, replacing the existing open space.

Publicly Accessible Open Spaces and Pedestrian Routes

Several redevelopment schemes are projected to provide additional open space on sites that were inaccessible as at 31st March 2021; this includes:

- A new public plaza (Bishopsgate Plaza) at 80 Houndsditch⁴;
- Public access to the disused open space west of Guinness Court;
- A proposed extension of the Riverside Walk, at Brooks Wharf;
- New public realm at 100 Leadenhall Street, and
- New ground-level public realm beneath the upper floors of 1 Undershaft.

City Public Realm Projects

Projected **Public Realm enhancement works**⁵ will include:

- Extended public space at West Smithfield;
- Conversion of street space at London Wall Rotunda to open space, and
- New open space at St. Dunstan's Hill.

⁴ This was opened in Autumn 2021.

⁵ The City Corporation's **area enhancement strategies** set out these potential open spaces, but they do not have projected implementation dates; thus **Appendix 4** does not list these sites.

5. Inclusive Access to Open Space

Introduction

This section analyses delivery of accessible open space through redevelopment schemes and improvements to existing open spaces.

Delivery of Accessible Open Spaces (2011/12 to 2020/21)

The City of London **Open Spaces and Recreation Audit** sets out the City of London's accessibility criteria.

Most new publicly accessible open space completed within the City of London between 2011/12 and 2020/21 provided inclusive access in accordance with the City of London accessibility criteria. Examples included:

- A raised plinth at Sun Court, which provides a dropped kerb for wheelchair access;
- Sky Garden Walk, which can be accessed using ramps and platform lifts;
- Open space under the upper floors of the Leadenhall Building, which slopes gradually, to allow access to land at a lower level;
- London Wall Place, which is situated at ground level and replaces the elevated open space at St. Alphage Highwalk, which had limited step-free access, and
- The new open space at Viscount Street, which has step-free access.

Improvements to Existing Open Spaces (2011/12 to 2020/21)

Between 2011/12 and 2020/21, some open spaces were modified to provide inclusive access; this included:

- The central lawn at Festival Gardens (**Picture 9**), which was raised to allow step-free access from the adjacent paved area;
- St. Andrew Holborn Churchyard, which has step-free public access from a formerly private area of the site;
- The Golden Lane Estate playground (**Picture 10**), which was raised to the same level as the adjacent open space, to allow for step-free access;

Local Plan Monitoring Report – Open Spaces and Recreation

- St. Botolph Without Aldgate Churchyard, where the City Corporation provided ramped access, and
- Bartholomew Close, where the street space was converted into a step-free, pedestrianised open space.



Picture 9: Festival Gardens



Picture 10: Playground at the Golden Lane Estate

Projected Open Space (2021/22 to 2025/26)

New open space, projected for completion between 2021/22 and 2025/26, will provide inclusive access; for example:

- Ramped access within the open space adjacent to 15-16 Minories;
- Lift access to the open spaces at 21 Moorfields, and
- Ramped access within the open space adjacent to 1 Undershaft, which will be situated on two levels.

6. Biodiversity, Children’s Play, and Outdoor Sports

Introduction

This section analyses how the City of London’s open spaces are designed to address:

- Sites of Importance for Nature Conservation (SINCs);
- Wildlife habitats;
- Trees;
- Provision for children and young people; and
- Outdoor sport facilities.

Sites of Importance for Nature Conservation (SINCs)

As at 31st March 2021, 10 [Sites of Importance for Nature Conservation \(SINCs\)](#) were designated within the City of London. This included Finsbury Circus, which was reopened fully during 2020/21, following temporary closure to facilitate construction works associated with the Elizabeth Line.

Upon adoption of the emerging Draft [City Plan 2036](#), the City of London is projected to have 13 SINCs. Projected new SINCs include Postman’s Park, Portsoken Street Garden and St. Dunstan in the East Church Garden, which were pending formal designation as at 31st March 2021.

Wildlife Habitats and Trees

The City of London is a dense urban environment, with relatively low levels of wildlife habitats and trees compared to other local authority areas. Open spaces completed between 2011/12 and 2020/21 varied in character, with a range of sites providing habitats for wildlife, including:

- Flower planting, at sites including Angel Lane and Mitre Square;
- Green walls⁶, at Sky Garden Walk and Clerks Place; and
- Tree planting; examples include:
 - New Ludgate Place;

⁶ The City of London’s reports on **Roof Terraces and Green Roofs** provide further details.

- Old Change Court;
- Bartholomew Close;
- Bloomberg Place and
- Aldgate Square.

Open spaces projected for completion between 2021/22 and 2025/26 will provide wildlife habitats, including:

- A green wall adjacent to the realigned open space at Harp Alley, and
- Tree planting within projected open spaces at:
 - 21 Moorfields;
 - Harp Alley and
 - 100 Leadenhall Street.

Children’s Play, and Outdoor Sports

The City of London’s open spaces include provision for:

- Children’s play; and
- Outdoor sports.

There was minimal change to sports and play provision in the City of London during the period 2011/12 to 2020/21:

- The play area at Vine Street was demolished during the 2011/12 period, and
- The temporary use of Broadgate Circle as an ice rink during the winter ceased in 2013/14; the City Corporation re-sited the ice rink at Exchange Square.

During the same period, new provision included:

- Small-scale outdoor recreation facilities at Smithfield Rotunda Garden and King George’s Field, completed during 2011/12⁷; and
- Play equipment at Tower Hill Gardens, completed during 2012/13.

This represents a net loss of just 0.02 hectares (200m²) of outdoor play and sport provision.

A new outdoor sports facility is projected adjacent to 1 Undershaft; this will comprise seasonal use of part of the existing open space as an ice rink (projected to be 900m² in area).

⁷ The play area is located within the London Borough of Tower Hamlets, but the report statistics include the entire open space at Tower Hill Gardens, which is partially within the City of London.

Local Plan Monitoring Report – Open Spaces and Recreation

Appendices 2 to 5 give more details of the changes listed above, but only sites where open space was lost or created (or where this is projected to occur). Thus, they do not list sites involving only a change in open space typology.

Appendices

Appendix 1: Open Space Losses and Gains (2011/12 to 2025/26)

Financial Year End (as at 31 st March)	Total Open Space (Hectares) at Financial Year Start	Loss (Hectares)	Loss (Number of Sites)	Gain (Hectares)	Gain (Number of Sites)	Net Change (Hectares)	Total Open Space (Hectares) at Financial Year End
Past Changes							
2011/12	32.22	0.08	3	0.07	2	-0.01	32.21
2012/13	32.21	0.10	1	0.17	2	0.07	32.28
2013/14	32.28	0.19	3	0.11	1	-0.08	32.20
2014/15	32.20	0.03	1	0.33	4	0.30	32.49
2015/16	32.49	0.22	3	0.04	2	-0.18	32.32
2016/17	32.32	0.23	4	0.07	3	-0.16	32.15
2017/18	32.15	0.00	0	0.82	7	0.82	32.97
2018/19	32.97	0.02	1	0.71	7	0.69	33.66
2019/20	33.66	0.06	1	0.17	4	0.11	33.77
2020/21	33.77	0.15	2	0.63	6	0.47	34.24
Total		0.87	19	2.32	38	1.44	
Projected Changes							
2021/22	34.24	0.39	1	0.48	4	0.09	34.33
2022/23	34.33	0.00	0	0.05	0	0.05	34.38
2023/24	34.38	0.01	0	0.73	6	0.72	35.11
2024/25	35.11	0.00	0	0.00	0	0.00	35.11
2025/26	35.11	0.00	0	0.64	4	0.64	35.75
Total		0.40	1	1.90	14	1.51	

Local Plan Monitoring Report – Open Spaces and Recreation

For **Appendices 2 to 5** where the source is ‘City Corporation’, this relates to a **City Public Realm** project; otherwise, it is the most up-to-date planning permission reference.

The City of London Open **Spaces and Recreation Audit** defines all typologies.

Appendix 2: Open Space Losses (2011/12 to 2020/21)

Site	Public Access	Source	Permanent or Temporary Loss	Financial Year of Closure	Area (Hectares)	Typology
Vine Street play area	No	12/00263/FULMAJ	Permanent	2011/12	0.01	Provision for children and young people
Broad Lane	Yes	10/00904/FULEIA	Permanent	2011/12	0.02	Secondary civic spaces
Walkway adjacent to 5 Broadgate	Yes	10/00904/FULEIA	Permanent	2011/12	0.04	Secondary civic spaces
Monument Street	Yes	13/00049/FULMAJ	Permanent	2012/13	0.1	Secondary civic spaces
St. Alphage Highwalk	Yes	10/000832/FULEIA	Permanent	2013/14	0.15	Secondary civic spaces



Local Plan Monitoring Report – Open Spaces and Recreation

Site	Public Access	Source	Permanent or Temporary Loss	Financial Year of Closure	Area (Hectares)	Typology
Creechurch Place	Yes	10/00371/FULMAJ	Permanent	2013/14	0.01	Secondary civic spaces
Monument Street	Yes	13/00049/FULMAJ	Permanent	2014/15	0.03	Primary civic spaces
Old Change Court	Yes	14/00780/FULMAJ	Temporary	2015/16	0.09	Primary civic spaces
Bartholomew Close	Yes	12/00256/FULEIA	Temporary	2015/16	0.01	Secondary civic spaces
Moorfields Highwalk	Yes	14/01179/FULEIA	Permanent	2015/16	0.12	Secondary civic spaces
Land adjacent to International Financial Centre, 25 Old Broad Street	Yes	14/00579/FULL	Permanent	2016/17	0.02	Secondary civic spaces
Land at Queen Elizabeth II Wing, St.	No	15/00417/FULMAJ	Temporary	2016/17	0.09	Amenity spaces



Local Plan Monitoring Report – Open Spaces and Recreation

Site	Public Access	Source	Permanent or Temporary Loss	Financial Year of Closure	Area (Hectares)	Typology
Bartholomew's Hospital, Little Britain						
Victoria Embankment	Yes	Thames Water Utilities Limited (Thames Tideway Tunnel) Order 2014 as amended	Temporary	2016/17	0.09	Secondary civic spaces
Private garden at Bernard Morgan House, 45-47 Golden Lane	No	16/00590/FULL	Permanent	2016/17	0.02	Amenity spaces
South playground at St. Paul's Cathedral School, 2 New Change	Yes	16/00850/FULL	Temporary	2018/19	0.02	Provision for children and young people

Local Plan Monitoring Report – Open Spaces and Recreation

Site	Public Access	Source	Permanent or Temporary Loss	Financial Year of Closure	Area (Hectares)	Typology
Garden at Citicape House, 65 Holborn Viaduct	No	12/00105/FULMAJ	Permanent	2019/20	0.06	Amenity spaces
Aldgate Bus Station Piazza	Yes	13/01055/FULEIA	Permanent	2020/21	0.05	Primary civic spaces
Cannon Street Gardens	Yes	19/01150/FULL	Temporary	2020/21	0.11	Parks and gardens

Appendix 3: Open Space Gains (2011/12 to 2020/21)

Local Plan Monitoring Report – Open Spaces and Recreation

Site	Public Access	Source	New or Reopened	Financial Year of Completion	Area (Hectares)	Description	Typology
Angel Lane	Yes	City Corporation	New	2011/12	0.03	Linear public space, with landscaping and seating.	Parks and gardens
Queen Street Place	Yes	City Corporation	New	2011/12	0.04	Planting and seating on street space.	Secondary civic spaces
Sun Court	Yes	City Corporation	New	2012/13	0.003	Raised plinth with seating.	Primary civic spaces
The Queen's Diamond Jubilee Garden	Yes	City Corporation	New	2012/13	0.17	Garden adjacent to St. Paul's Cathedral, on the former coach park site.	Parks and gardens

Local Plan Monitoring Report – Open Spaces and Recreation

Site	Public Access	Source	New or Reopened	Financial Year of Completion	Area (Hectares)	Description	Typology
Three Quays Walk	Yes	1181AE	Reopened	2013/14	0.11	Realigned and enhanced, upon completion of redevelopment works.	Secondary civic spaces
Sky Garden Walk	Yes	11/00234/FULL	New	2014/15	0.08	New open space and thoroughfare, adjacent to 20 Fenchurch Street.	Secondary civic spaces
Holborn Circus	Yes	City Corporation	New	2014/15	0.03	Improved street environment, with trees and seating.	Secondary civic spaces

Local Plan Monitoring Report – Open Spaces and Recreation

Site	Public Access	Source	New or Reopened	Financial Year of Completion	Area (Hectares)	Description	Typology
Leadenhall Building, 122 Leadenhall Street	Yes	04/0111/FULEIA	New	2014/15	0.19	Open space below the upper floors of the Leadenhall Building.	Primary civic spaces
John Carpenter Street	Yes	City Corporation	New	2014/15	0.03	Safe public space, with seating and lighting.	Secondary civic spaces
New Ludgate Place	Yes	11/00049/FULEIA	New	2015/16	0.03	New piazzetta at Old Bailey, with outdoor seating space for restaurants.	Primary civic spaces
Laurence Pountney Hill	Yes	City Corporation	New	2015/16	0.01	Public realm amenity, with seating.	Secondary civic spaces
Plough Place	Yes	City Corporation	New	2016/17	0.01	Tree planting and seating.	Secondary civic spaces



Local Plan Monitoring Report – Open Spaces and Recreation

Site	Public Access	Source	New or Reopened	Financial Year of Completion	Area (Hectares)	Description	Typology
Athene Place	Yes	11/00210/FULMAJ	New	2016/17	0.01	Extension to the adjacent open space, with additional seating.	Primary civic spaces
40 Chancery Lane	Yes	11/00915/FULL	New	2016/17	0.05	A publicly accessible courtyard at the rear of the new building.	Primary civic spaces
Angel Court	Yes	13/00985/FULL	New	2017/18	0.03	A new open space adjacent to the existing street.	Secondary civic spaces
Bloomberg Place	Yes	11/00935/FULEIA	New	2017/18	0.19	Three public squares adjacent to the new buildings.	Secondary civic spaces

Local Plan Monitoring Report – Open Spaces and Recreation

Site	Public Access	Source	New or Reopened	Financial Year of Completion	Area (Hectares)	Description	Typology
Mitre Square	Yes	13/01082/FULMAJ	New	2017/18	0.12	A landscaped open space on former street space.	Primary civic spaces
London Wall Place	Yes	10/00832/FULEIA	New	2017/18	0.42	A new ground-level open space, replacing an open space at highwalk level.	Parks and gardens
Middlesex Street	Yes	City Corporation	New	2017/18	0.02	Public open space with seating.	Secondary civic spaces
Salters Court	Yes	13/00039/FULMAJ	Reopened	2017/18	0.03	A smaller public open space, with improved access.	Primary civic spaces

Local Plan Monitoring Report – Open Spaces and Recreation

Site	Public Access	Source	New or Reopened	Financial Year of Completion	Area (Hectares)	Description	Typology
Moor Lane Community Garden	Yes	City Corporation	New	2017/18	0.01	Community garden ⁸ located on street space.	Allotments, community gardens and urban farms
Old Change Court	Yes	14/00780/FULMAJ	Reopened	2018/19	0.05	Smaller, enhanced open space.	Parks and gardens
Aldgate Square	Yes	14/00986/FULL	New	2018/19	0.34	New open space on land originally forming part of the Aldgate Gyratory.	Primary civic spaces
Lime Street Square	Yes	14/00027/FULMAJ	New	2018/19	0.03	Extension to the existing open space at the Willis Building.	Secondary civic spaces

⁸ Originally opened as a pocket park, but this was enhanced in 2020 to form a community garden.



Local Plan Monitoring Report – Open Spaces and Recreation

Site	Public Access	Source	New or Reopened	Financial Year of Completion	Area (Hectares)	Description	Typology
Artizan Street	Yes	14/00371/FULLR3	New	2018/19	0.03	New community space on land previously occupied by a redundant vehicular access.	Secondary civic spaces
Monument Street	Yes	City Corporation	New	2018/19	0.04	Raised planters and informal seating opportunities.	Secondary civic spaces
Sugar Quay, 1 Water Lane	Yes	12/01104/FULMAJ	New	2018/19	0.02	Residents' garden, ancillary to new housing.	Primary civic spaces
Bartholomew Close	Yes	16/00165/FULEIA	New	2018/19	0.07	Upgraded open space, with seating and trees.	Secondary civic spaces



Local Plan Monitoring Report – Open Spaces and Recreation

Site	Public Access	Source	New or Reopened	Financial Year of Completion	Area (Hectares)	Description	Typology
Clerks Place	Yes	11/00332/FULEIA	New	2019/20	0.03	New public access space, adjacent to 100 Bishopsgate.	Primary civic spaces
St. Alphage Gardens	Yes	City Corporation	New	2019/20	0.01	Extension to the open space.	Parks and gardens
Garden at the Queen Elizabeth II Wing, St. Bartholomew's Hospital, Little Britain	Yes	16/00165/FULMAJ	Reopened	2019/20	0.08	Enhanced open space, with public areas, replacing an under-used private garden.	Parks and gardens
Crosby Square	Yes	15/00764/FULEIA	New	2020/21	0.05	New open space on highway land.	Primary civic spaces

Local Plan Monitoring Report – Open Spaces and Recreation

Site	Public Access	Source	New or Reopened	Financial Year of Completion	Area (Hectares)	Description	Typology
Finsbury Circus Gardens	Yes	10/00763/XRAIL	Reopened	2020/21	0.49	Reopened garden, following excavations to facilitate Elizabeth Line construction.	Parks and gardens
South playground at St. Paul's Cathedral School, 2 New Change	No	16/00850/FULL	Reopened	2020/21	0.03	Realigned playground.	Provision for children and young people
Viscount Street	Yes	16/00590/FULL	New	2020/21	0.01	Pocket park, replacing a private garden.	Primary civic spaces
Cursitor Street	Yes	City Corporation	New	2020/21	0.02	New public realm on street space.	Secondary civic spaces

Local Plan Monitoring Report – Open Spaces and Recreation

Site	Public Access	Source	New or Reopened	Financial Year of Completion	Area (Hectares)	Description	Typology
New Change	Yes	City Corporation	New	2020/21	0.02	Green space with seating.	Secondary civic spaces

Appendix 4: Projected Open Space Losses (2021/22 to 2025/26)

Site	Public Access	Source	Permanent or Temporary Loss	Financial Year of Closure	Area (Hectares)	Typology
Dark House Walk	Yes	17/01287/FULEIA	Permanent	2021/22	0.04	Primary civic spaces/Local green corridors
Harp Alley	Restricted	18/00878/FULMAJ	Permanent	2021/22	0.03	Amenity spaces
Open space adjacent to 1 Undershaft	Yes	16/00075/FULEIA	Temporary	2021/22	0.24	Primary civic spaces



Local Plan Monitoring Report – Open Spaces and Recreation

Site	Public Access	Source	Permanent or Temporary Loss	Financial Year of Closure	Area (Hectares)	Typology
Land adjacent to 2 and 3 Finsbury Avenue	Yes	20/00869/FULEIA	Permanent	2021/22	0.01	Primary civic spaces

Appendix 5: Projected Open Space Gains (2021/22 to 2025/26)

Site	Public Access	Source	New or Reopened	Financial Year of Completion	Area (Hectares)	Description	Typology
Aldgate Bus Station	Yes	15/01067/FULL	New	2021/22	0.24	The former piazza adjacent to the bus station will be replaced by a larger open space with improved access.	Secondary civic spaces
Bishopsgate Plaza	Yes	17/00623/FULL	New	2021/22	0.07	New public plaza, on land formerly occupied by retail units.	Primary civic spaces

Local Plan Monitoring Report – Open Spaces and Recreation

Site	Public Access	Source	New or Reopened	Financial Year of Completion	Area (Hectares)	Description	Typology
35 Vine Street	Yes	17/00239/FULMAJ	New	2021/22	0.03	New open spaces to be created adjacent to student accommodation.	Secondary civic spaces/Parks and gardens
Cannon Street Gardens	Yes	19/01150/FULL	Reopened	2021/22	0.11	Reopening of the garden following temporary closure to facilitate works to 25 Cannon Street.	Parks and gardens
Brook's Wharf	Yes	11/00572/FULMAJ	New	2022/23	0.05	Proposed extension to the Riverside Walk, between Broken Wharf and Queenhithe.	Secondary civic spaces

Local Plan Monitoring Report – Open Spaces and Recreation

Site	Public Access	Source	New or Reopened	Financial Year of Completion	Area (Hectares)	Description	Typology
Holborn Viaduct	Yes	19/01038/FULMAJ	New	2023/24	0.03	New public open space, replacing the demolished private garden.	Primary civic spaces
Moorfields Highwalk	Yes	17/01095/FULEIA	New	2023/24	0.09	Urban square, covered piazza and linear garden replacing the original elevated Moorfields Highwalk open space.	Primary civic spaces/Parks and gardens/Natural and semi-natural greenspaces
Harp Alley	Yes	18/00878/FULMAJ	New	2023/24	0.02	New, realigned public access open space.	Primary civic spaces

Local Plan Monitoring Report – Open Spaces and Recreation

Site	Public Access	Source	New or Reopened	Financial Year of Completion	Area (Hectares)	Description	Typology
Victoria Embankment	Yes	Thames Water Utilities Limited (Thames Tideway Tunnel) Order 2014 as amended	Reopened	2023/24	0.1	Reopened section of the Riverside Walkway, following completion of the Thames Tideway Tunnel .	Secondary civic spaces
Bazalgette Embankment	Yes	Thames Water Utilities Limited (Thames Tideway Tunnel) Order 2014 as amended	New	2023/24	0.49	New open space, associated with the Thames Tideway Tunnel .	Primary civic spaces
100 Leadenhall Street	Yes	18/00152/FULEIA	New	2025/26	0.03	Enhanced public realm.	Secondary civic spaces

Local Plan Monitoring Report – Open Spaces and Recreation

Site	Public Access	Source	New or Reopened	Financial Year of Completion	Area (Hectares)	Description	Typology
Open space adjacent to 1 Undershaft	Yes	16/00075/FULEIA	Reopened	2025/26	0.52	Reopened and extended public realm, with seasonal use as an ice rink.	Primary civic spaces/Outdoor sports facilities
Finsbury Avenue	Yes	16/00149/FULEIA	New	2025/26	0.03	Realigned open space, following redevelopment works at 2-3 Finsbury Avenue.	Primary civic spaces

Information

The material featured in this publication is subject to Crown copyright protection. Crown copyright material is reproduced with the permission of Her Majesty's Stationery Office (HMS).

General Planning Enquiries: 020 7332 1710

E-mail: plans@cityoflondon.gov.uk

Queries regarding open spaces data: PLN-Moninfo@cityoflondon.gov.uk

Queries regarding open spaces and recreation policy: localplan@cityoflondon.gov.uk

Juliemma McLoughlin, Executive Director Environment

PO Box 270, Guildhall, London EC2P 2EJ

The City of London Corporation is the Local Authority for the financial and commercial heart of Britain, the City of London.