



CITY WALKS
Architecture

Designs of the times

Watch the modern
face of the City unfold
in front of you



**NEW LONDON
ARCHITECTURE**

The City of London has always been a centre for groundbreaking architecture. As a world leader in business and finance, the City has to continually adapt to changing needs – combining the best of the old with the best of the new – and over the centuries many of its buildings have become icons not just of London, but of the country as a whole.



This route has been devised to take you through the City and explore some of the latest developments in architecture. From start to finish the walk will take about 90 minutes at an average walking pace. There are also opportunities to visit points of interest along the way (blue markers).

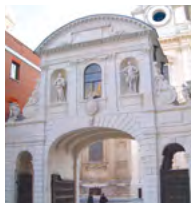
The buildings chosen are just a sample of the many architecturally fascinating buildings you can see in the City.



A St Paul's Cathedral
The current cathedral, the fourth to occupy this site, was designed by Sir Christopher Wren and built between 1675 and 1710. As well as a spiritual focus for the nation it has also become an icon of London.

City Information Centre (2007) 1
A dynamic contemporary building in an area of exceptional architectural and urban heritage, the centre's triangular plan evolved from analysis of pedestrian flows. Its folded metallic envelope is clad in stainless steel panels, and the sloping roof facilitates the collection of rainwater to irrigate plants. Designed by Make Architects, it won the New City Architecture Award 2007, the RIBA Architectural Excellence Award in 2009 and the Civic Trust Award for Greater London Region in 2009.





B Temple Bar

At the south entrance to Paternoster Square is this 350 year-old monument. One of the Bars through which people and traffic had to pass to enter the City, it was removed in 1878 because of congestion but placed in its current location in 2004.



150 Cheapside

One New Change



Keeping your back towards the City Information Centre, turn left and walk along St. Paul's Churchyard with the Cathedral on your right. Cross the road and walk directly past the Cathedral steps towards the archway in front of you. Go through the archway and enter Paternoster Square. Standing with your back towards the monument in the middle of the square and keeping Temple Bar on your right side, walk directly forwards passing through the passage of shops until you reach St Paul's underground station on your left. Cross the main road at the lights.

150 Cheapside (2009) 2

This landmark office development, designed by Michael Aukett Architects, is a contemporary design of glass, aluminium and traditional Portland stone. It has been designed to blend with the historical buildings around it, and the curve of the main elevation has been generated by the sweep of the road line from Cheapside into St Martins Le Grand.

Turning to your right, continue down Cheapside, noticing the large glass building on the opposite side of the road.

One New Change (2010) 3

A mixed-use scheme of office accommodation and retail space by architect Jean Nouvel, this is a significant addition to the City's landscape and a major part of the on-going retail expansion on Cheapside. The building's glass exterior is an attempt to echo the surrounding Portland stone and brick façades. It has a gradual

change in density from clear to opaque, with 22 different colours and more than 250 different patterns. There are more than 6,300 glass panels of different sizes and shapes, with 4,300 individually unique pieces of glass.

Continue along Cheapside until you reach Wood Street on your left. Walk down Wood Street until you reach Gresham Street. Cross the road and look back towards Wood Street.



10 Gresham Street

10 Gresham Street (2003) 4

The design includes 18m column free spans and full height glazing which provide great interior flexibility, whether for trading, open plan or cellular layouts. The building occupies an island site – a comparatively rare phenomenon in the City where land is scarce. This has created an urban space for pedestrians, with a walkway, wall fountain and retail building adding to amenities. It was designed by architects Foster + Partners.

Turning back around and continuing down Wood Street, stop before you reach the tower in the centre of the road.

100 Wood Street



100 Wood Street (2000) 5

Designed by Foster + Partners, the east façade is clad in a simple arrangement of alternating Portland stone and glass, and a curved roof features alternating and transparent panels. On the other side, a great curved glass scoop with leaning steel columns brings light into the building, and frames the former churchyard of St Mary Staining.



88 Wood Street

Keep walking past the tower, stopping by the yellow columns on your left.

88 Wood Street (1999) 6

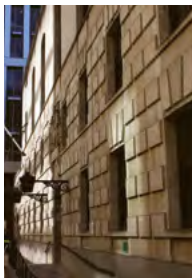
Designed by the Richard Rogers Partnership, this has three linked blocks of office accommodation that step up from eight storeys on Wood Street, to 18 storeys to the west. Ultra-clear, low-iron glazing has been used for most of the building's façades. The glass's extraordinary level of transparency allows internal elements, such as lift shafts and stairwells, to be displayed to dramatic effect.

Turning to your right, walk underneath the large grey building into Aldermanbury Square.

5 Aldermanbury Square (2007) 7

This 18-storey commercial office building draws together Wood Street and Aldermanbury Square. It creates a public space and links to a pedestrian route at ground level which connects to the Barbican Highwalk. The building is composed of stacking and weaving stainless steel elements, while the ground floor materials have a more geological character: granite, concrete and water, over which the steel framed building is 'perched'. Designed by Eric Parry Architects, it was shortlisted for the RIBA Stirling Prize in 2009.

Continue heading forward on to Basinghall Street, heading under the pedestrian bridge and veering left on to Basinghall Avenue. Keep walking until you reach the end of the road.



C Wood Street Police Station

This 1966 building was designed by McMoran & Whitby. They produced durable buildings with a respect for context, but avoided any accusation of unimaginatively reproducing the past. Theirs was a progressive classicism full of invention and beauty.

5 Aldermanbury Square



One Coleman Street (2007) 8

Designed by David Walker Architects, this building has a strong repeating pattern and deep window reveals. The subtle angles of the concrete create a varied composition topped with a stainless steel crown whose reflective surface changes with the light: sometimes it almost disappears into the sky, sometimes it appears as a dark and very visible 'hat'. It won the Concrete Centre's Award for Sustainability in 2007 because it used a very high percentage of recycled materials.



One Coleman Street

Turn left on to Coleman Street, walking until the end and crossing London Wall (a busy road). Turn left and continue walking until you reach Fore Street Avenue.

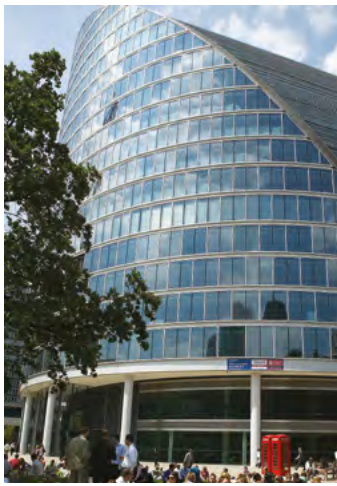
London Wall Place (2017) 9

London Wall Place pays tribute to its brutalist predecessor through its white concrete and

London Wall Place



ribcage design encasing the buildings. The two complementary office blocks are separated by a public garden and walkways which entwine around the 14th-century remains of St Alphege church tower, providing an elegant green space in the confines of the City.



Moor House

Walk back in the direction you came towards Moorgate.

Moor House (2005) 10

A Foster + Partners-designed 19-storey office building, Moor House is situated on a prominent island site and features a curvaceous façade and an offset grid pattern to the side façades. It also rises up from a two storey retail plaza. The curves draw the visitor into what is an impressive reception, boasting 10m high walls. Moor House had the deepest foundations in the City when it was built.

Turn left onto Moorgate at the Globe Pub. Continue along Moorgate until you reach Ropemaker Street on your left. Walk down Ropemaker Street, stopping by Finsbury Street on your right.

Ropemaker Place (2009) 11

Arup Associates has designed a tall section and series of 'step-backs' with four roof gardens creating eco-terraces and an atrium bringing in more light. It features cladding of filled, projecting indigo-hued windows. These change as the sun's position moves but will also help reduce energy required for cooling and alter the exterior's 'canvas'. It won the Estates Gazette's Green Building of the Year Award in 2009.

Ropemaker Place



Follow along Finsbury Street, turning right on Chiswell Street. Cross City Road and walk straight, continuing along Finsbury Square. Walk along Sun Street and stop by the multi-coloured sculpture in the pavement.



5 Broadgate

5 Broadgate (2016) 12

Designed by Make Architects, this 13-storey 'landscaper' is not only functional but is an ambitious and visually innovative design, and has become a catalyst for further regeneration of the Broadgate area. The bold design is based on the form of a perfectly machined metal object, a look that has meant 5 Broadgate is one of the largest stainless steel-clad buildings in the world.

Walk around 5 Broadgate to the rear of the building and cross Broadgate Circle. Exit and walk to Eldon Street. Turn left onto Liverpool Street and continue along until you reach Bishopsgate (a busy road). Cross the road and turn right, walking until you reach Camomile Street.

Heron Tower



Heron Tower (2011) 13

Designed by KPF architects, this 46-storey building stretches 230m into the skyline. The tower is currently the tallest in the City and provides 36 storeys of office space with a restaurant and skybar on levels 38-40. The neighbouring Heron Plaza will further incorporate new public spaces and a network of squares and gardens to create new green space in the City's heart.



100 Bishopsgate

100 Bishopsgate (2018) ¹⁴

Whilst its more traditional design is yet to evoke a nickname like its neighbours, 100 Bishopsgate has already been affectionately referred to as the skyscraper with a skirt. Designed by Allies and Morrison Woods Bagot, the form of the 40-storey tower morphs from a parallelogram at its base to a rectangle at its top, in response to the sporadic foundation space available at

street level. The shape transition coupled with the shaded reflective windows give the illusion of the building twisting.

■ *Turn left on Camomile Street until you reach St Mary Axe.*



60-70 St Mary Axe

60-70 St Mary Axe (2018) ¹⁵

A distinctive new 24-storey office development referred to as the 'Can of Ham' will join the cluster of towers in 2018. Designed by Foggo Associates Architects, the building will provide flexible, modern office space organised around a central core. The development will incorporate retail accommodation and public space at ground level. The design features a number of energy-saving measures, including shading fins on the curved façades, glazed double-wall cladding and borehole thermal energy storage.

■ *Turn right down St Mary Axe.*

30 St Mary Axe (2004) ¹⁶

Known as 'The Gherkin', this has become an instantly recognisable addition to the City's skyline. The building has a circular plan, widens

in profile as it rises and tapers towards its apex. This distinctive form responds to the constraints of the site: it appears more slender than a rectangular block of equivalent size, and the slimming of its profile towards the base maximises the public realm at ground level. At the top, some 180m high, a restaurant and hospitality area offers 360° views of London. Designed by Foster + Partners, it won the RIBA Stirling Prize in 2004.



30 St Mary Axe

■ *Continuing down the road, turn right on to Undershaft.*



1 Undershaft

1 Undershaft (2019) ¹⁷

To be the tallest summit in the City, at 73 storeys, Eric Parry Architecture's 1 Undershaft will fall just short of matching the Shard's height. Adding office space for up to 10,000 workers, it will also include London's highest public viewing gallery on the top floor, and the first accessible floor will be built 10.5 meters off ground level to create a sizeable public space below. To maximise the space, the core is positioned to the side of the tower and diamond shaped external cross bracing is being used to provide additional structural strength. The design has led 1 Undershaft to gain the nickname, 'The Trellis'.

■ *Veer right on to Great St Helen and walk down until you reach 22 Bishopsgate.*

22 Bishopsgate (2019) ¹⁸

Planned as one of the peaks in the City's ever-growing skyline, at 288m 22 Bishopsgate will be one of the tallest skyscrapers in the Square Mile. At 62 stories, the PLP Architecture building will not only accommodate considerable office space, a 'vertical village' will provide social amenities throughout the building including a public realm with art and a planned free-to-access public viewing gallery.

Tower 42 (1980) ¹⁹

Tower 42 (formally the Natwest Tower) was the first skyscraper in the City, and at 183m, was the tallest in the City until the completion of Heron Tower in 2009. The building today is multi-tenanted and comprises Grade A office space and restaurant facilities, with a restaurant situated on the 24th floor and a champagne and seafood bar on the 42nd floor.

■ *Turn left and walk along Bishopsgate, turn left on to Leadenhall Street.*

Tower 42





The Leadenhall Building

The Leadenhall Building (2014) ²⁰

With a distinctive tapering form designed to protect views of St Paul's Cathedral, this building was designed by Rogers Stirk Harbour + Partners. The triangular shape led to it being nicknamed 'The Cheese grater'. More than 80% of the components were prefabricated off-site and then delivered and assembled on-site, making the building process safer, less wasteful and more accurate, especially in such a constricted area.

Continue along Leadenhall Street until you reach Lime Street on your right.



The Scalpel

The Scalpel (2017) ²¹

On the corner of Lime Street and Leadenhall Street, The Scalpel will be instantly recognisable due to its distinctive angular design. Cutting through the air, this skyscraper will stand at 190m tall with 38 storeys and be purpose built as the headquarters for insurance company W.R. Berkley. Designed by Kohn Pedersen Fox, The Scalpel's public spaces are an important part of its make-up and includes a new public square at the base of the building. As well as restoring the historic Lime Street Square, the new public space will include a new coffee shop, echoing the original 17th-century City coffee houses.

Cross the road and walk down Lime Street.

The Willis Building (2008) ²²

The Willis Building was designed by Foster + Partners, with a striking 28-storey tower and a series of overlapping curved shells, in plan resembling the shape of a fish tail. The tower



The Willis Building (left), The Lloyd's Building (right)

reduces in width and height as it curls towards the east down to six storeys at its lowest point. The lower podium building incorporates a central atrium as well as a roof terrace and roof top pavilion.

The Lloyd's Building (1986) ²³

Richard Rogers' famous 'high tech' modernist icon expresses its structure and exposed services on the outside, freeing up the interior. The building consists of three main towers and three service towers around a central rectangular space. Revolutionary as it was, the Lloyd's Building still succeeded in complementing the City's existing architecture and is now a Grade I listed building. Stroll down Leadenhall and take time to look at the classic archway framing the Lloyd's futuristic elevation.

Walk down Lime Street until you reach Fenchurch Avenue. Turn left until you see 10 Fenchurch Street on your right.

10 Fenchurch Street



10 Fenchurch Street (2017) ²⁴

Whilst not reaching for the heights of some of its neighbours, Eric Parry Architects' 15-storey 10 Fenchurch Avenue is a distinctive addition to the Square Mile's skyline. 166 clean white glazed terracotta fins encase the building and a crystalline glass 'crown' sits at the summit. Changing appearance to reflect the daylight and weather conditions, the crown will provide a constantly evolving spectacle. Encircled by a public garden at its base and a canopy of trees and water features on its roof, it will act as an urban oasis to visitors.

Retrace your steps back onto Lime Street. Turn left and continue along until you reach 20 Fenchurch Street in front of you.

20 Fenchurch Street



20 Fenchurch Street (2014) ²⁵

Nicknamed 'The Walkie Talkie', this 155m tower has its largest floorplates at its summit, not its base. Designed by architect, Rafael Viñoly, it incorporates office accommodation, retail, a café and a publicly accessible Sky Garden over three floors. The garden is the highest public park in London with an outside roof terrace, restaurant and a 360° panorama of London.



D **The Monument**
Sir Christopher Wren's flame-topped monument to the Great Fire of 1666 is the tallest isolated stone column in the world. Built in 1677 the Monument stands 202 ft high and is positioned 202 ft from the spot in Pudding Lane where the Great Fire started.

Continue along Fenchurch Street, then left at Gracechurch Street. Continue along, cross Eastcheap and head down Fish St Hill past The Monument. Cross Lower Thames Street turning left and walking down until you reach the small passage on your right leading to the River Thames. Across the river, notice The Shard, located in the borough of Southwark. This is the tallest building in the UK at 309 meters. Turn right and follow the river all the way to the railway bridge.

Watermark Place (2010) 26

This includes the largest area of open riverside space in the City. Fletcher Priest Architects have designed high performance glazing so tenants can make the most of the views – dot matrix glass with a palette of colours from a pixelated image of the water creates a dappled façade. At lower levels, the waterside buildings have clear glass cladding

protected by a massive five storey timber structure redolent of historic wharf structures and responsive timber louvres.



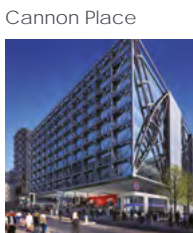
Watermark Place

Walk through the passage way under Cannon Street Bridge, then turn right onto Cousin Lane. Walk down Cousin Lane, crossing Upper Thames Street, then walk up Downgate Hill until you reach Cannon Street.

Cannon Place (2011) 27

Designed by Foggo Associates, this office building above Cannon Street station is conceived as a smooth-skinned bubble with part spherical corners. On the ground level is a dramatic station forecourt. The steel mega-structure's long beams and girders minimise the impact on the Scheduled Ancient Monument of Roman remains hidden below.

■ *Cross Cannon Street onto Walbrook.*



Cannon Place

The Walbrook (2010) 28

Designed by Foster + Partners, The Walbrook immediately stands out for its curves and distinctive cladding, creating a ripple effect. The dark slats that wrap the building are made of a glass-fibre-reinforced polymer – a material more commonly used in the bodywork of cars. Within the building, a large atrium complete with glass ceiling streams natural light to the central offices and trading floors.



Bloomberg Place (left), The Walbrook (right)

Bloomberg Place (2017) 29

Built over the site of an ancient Roman temple, Foster + Partners' design is respectful of the surrounds and 2,000 year history of the City. Sandstone from the largest quarry in Europe and hand crafted bronze from Japan were used on the building façade to ensure the colours and style of the building felt at home next to medieval structures. To achieve maximum energy efficiency, the bronze blades that coat the building act as moveable solar shades to offices within as well as gills to fill it with fresh air. In the basement, a new free museum will house The Roman Temple of Mithras back in its original location.

Continue north on Walbrook then turn left onto Poultry. Turn right onto King Street and continue until you reach Guildhall Yard at the end of the road. Once in the Yard, turn right and walk past the side of Guildhall Art Gallery to reach The City Centre on the corner of Basinghall Street.

The City Centre



The City Centre 30

Situated in the heart of the City, The City Centre documents the make-up of the Square Mile. Featuring a state of the art interactive model of the City's current and future built environment, check the website for viewing times: cityoflondon.gov.uk/citycentre

This publication has been produced by the City of London Corporation, a uniquely diverse organisation with three main aims: to support and promote the City as the world leader in international finance and business services; to provide local services and policing for the Square Mile; and to provide valued services to London and the nation.



As a custodian of London's heritage, the City provides stewardship for a huge collection of books, archives, pictures, photographs, prints and other materials, which constitute a major part of the recorded memory of London, including Londinium.

www.cityoflondon.gov.uk



NLA is the centre for London's built environment, bringing together the key figures in London government, development and design. NLA shares knowledge, identifies opportunities and debates the issues facing London's built environment through a regular programme of seminars, free talks, events and exhibitions.
www.newlondonarchitecture.org



City Visitor Trail

Discover more in the City with our City Visitor Trail – pick up a leaflet at the City Information Centre opposite St Paul's Cathedral.

When nature calls, take advantage of the Community Toilet Scheme. Look for the sticker in the window of participating shops, bars & restaurants.



@visitthecity



/visitthecity



/visitthecity

www.visitthecity.co.uk

Sign up to the City of London eShot for monthly updates of what's on in the Square Mile.

