



Our Impact and Key Facts

**Our Corporate
Plan 2024–2029**



Contents

Who we are	2
Our impact and key facts	4
Our people	5
Our broader remit	6
Sustainability and natural environment	8
Culture and heritage	10
Our community	12
Education and lifelong learning	14
Economic contributions and assets	16
Our responsibilities in the Square Mile	18
Our responsibilities outside the Square Mile	20

Who we are



Our mission

The City of London Corporation is the governing body of the Square Mile dedicated to a vibrant and thriving City, supporting a diverse and sustainable London within a globally-successful UK.

About the City of London Corporation

The City of London Corporation (CoLC) looks after the City of London ('the City' or 'Square Mile') on behalf of all who live, study, work, and visit; providing modern, efficient, and high-quality local services and policing for all.

We have a long history, a unique constitution, our own Lord Mayor, and a dedicated police service keeping the City safe.

Our independent and non-partisan political voice and convening power enables us to promote the interests of people and organisations across London and the UK, and play a valued role on the world-stage.

We aim to support London's communities through responsible business, charitable giving, improving the capital's air quality, providing education and skills for young people, and delivering affordable housing across London.

We protect and conserve 19 major green spaces in London and Southeast England – including Hampstead Heath and Epping Forest – and approximately 180 smaller ones in the Square Mile. They include important

wildlife habitats, sites of scientific interest and national nature reserves. They are protected from being built on by special legislation.

We are the port health authority for London, the largest port health authority in the UK. We protect public health by preventing infectious disease, ensuring water quality, making vessel inspections, and enforcing environmental controls.

The City Corporation provides local government services for our 8,600 residents (Census 2021) and 614,500 City workers (Office for National Statistics 2022) based in the Square Mile. To be truly representative of its population, businesses and other organisations registered in the Square Mile are entitled to nominate voters to City elections so that, alongside registered residents, they can have a say on the way the City Corporation is run.



**Our
impact
and
key facts**

Our people



There are

8,600

residents living in
the City of London.



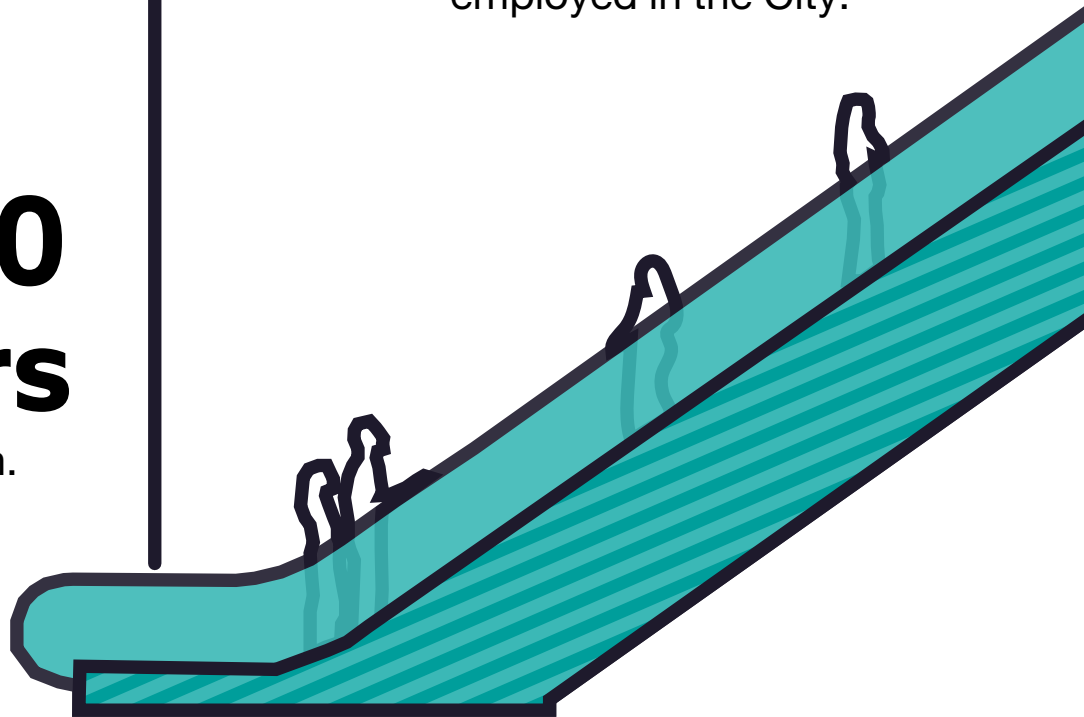
1 in 52

UK workers are
employed in the City.

There are

**614,500
workers**

in the City of London.



Welcoming **millions of domestic and international visitors** to the Square Mile each year.

Our broader remit



We work alongside our residents to deliver excellent services and ensure people live in good quality housing and live independent and healthy lives. This includes housing, education, safeguarding, care and support for children and adults, public health, libraries, leisure and adult education. Our work also focuses on building new affordable homes and providing well maintained, safe homes on our existing properties (including the Barbican Estate, Middlesex Street Estate, Golden Lane Estate and ten other estates situated in six different London boroughs).

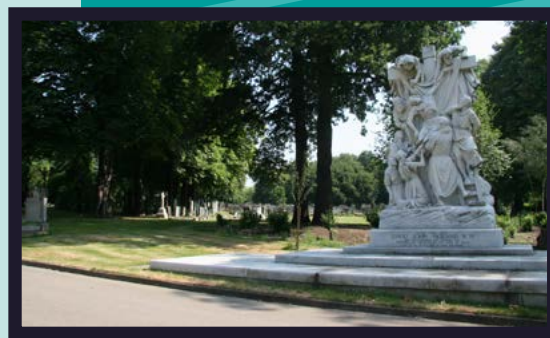


We improve air quality, enforce trading standards, combat noise pollution and deliver licensing regulations. Our responsibilities in the Square Mile include planning and development, building control, highways and transportation, cleansing and waste, environmental health, licensing and trading standards.



The City of London Police is a local service with a national role. It polices a unique local area and is also the National Lead Force for Fraud, and the National Police Chiefs' Council (NPCC) lead for economic, cyber and business crime. As such, it has responsibilities to keep both the City and the UK safe from crime.

Since 1856, we have operated the City of London Cemetery and Crematorium, a stunning 200-acre Grade 1 listed landscape and one of the largest municipal cemeteries in Europe.



We are the London Port Health Authority for the tidal River Thames, patrolling 94 miles of Britain's busiest waterway from Teddington to the outer Thames Estuary, and undertaking controls on imported food and feed that enter through numerous ports along the river.



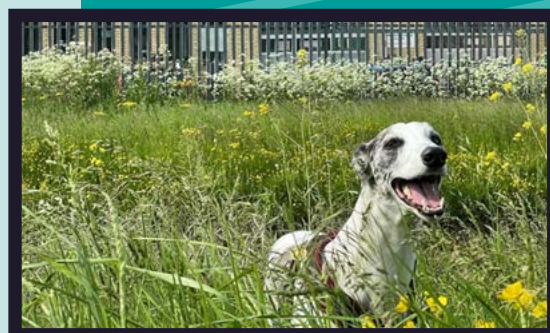
We operate markets, providing a vital link to the food supply chain for London and the South of England. The markets move 1 million tonnes of produce every year, contribute around £590 million in gross value added (GVA) to the UK economy, and support 10,250 jobs directly and through the associated supply chains.



We are a committed charity trustee of the City Bridge Foundation and our Natural Environment charities.



We manage the Heathrow Animal Reception Centre, and our staff look after around 14,000 dogs and cats, 400 horses, 150,000 reptiles, 1,000 birds and 25 million fish that are imported through Heathrow Airport each year. We are also the Animal Health Authority for Greater London, and we undertake animal establishment licensing for other local authorities.

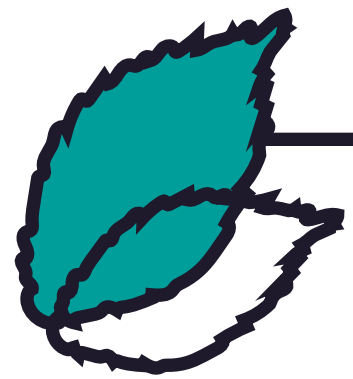


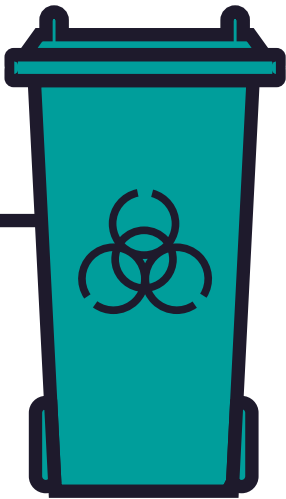
Sustainability and natural environment

We look after **11,000 acres** of natural habitats in London and the Home Counties, which is approximately the same size as 20 Hyde Parks. These remove an estimated **16,000 tonnes** of CO₂ per year, equivalent to 44% of the City Corporation's carbon footprint.

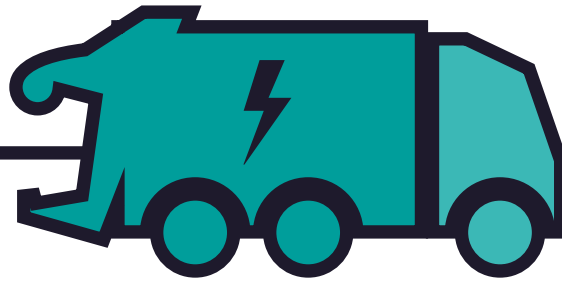
The estimated value of the benefits delivered by the natural capital assets quantified across the open spaces portfolio is **£126.8 million annually**, with a present value of **£3.6 billion over 50 years**.

Our green spaces are home to more than **58,000 ancient trees** and hundreds of endangered species. They receive **over 47 million visits** annually.





The City is lead authority for hazardous waste collection across London, arranging for around **5,600 collections** of asbestos and chemical waste from the public sector, schools and charities.



Our cleansing service provides waste and recycling collections for **7,000 residential properties**, using the first fully electric fleet of refuse collection vehicles in the country.



Walbrook Wharf waste transfer station handles around **50,000 tonnes** of general waste a year. The majority is from commercial premises with 2,500 tonnes from household and street cleansing.

Waste is transported down-river in barges powered by biofuel to an energy-from-waste facility. This **saves 5,500 vehicle movements** a year, reducing air and noise pollution and road traffic congestion, and re-emphasises City Corporation's commitment to the revival of the River Thames as a green highway for London.



Culture and heritage

- We are one of the Country's largest funders of culture, investing £130 million every year in heritage and cultural activities.
- Guildhall School of Music and Drama is ranked number one out of 12 in arts, drama and music by the Complete University Guide 2023.
- The Guildhall Art Gallery displays more than 250 portraits, paintings and sculptures and is free of charge to visit.
- We run London's archive service, collecting, preserving, sharing and celebrating the stories of London and Londoners with local, national and international audiences. We safeguard over 100km of records on businesses, schools, hospitals, charities, and many other organisations and people from London.



- The Barbican Centre holds thousands of events for the public each year and opens its doors for approximately 1.5 million visitors annually.
- We manage, maintain and conserve 877 heritage assets, including scheduled monuments, listed buildings, historic open spaces, churchyards and cemeteries, ceremonial furnishings, and historic carriages.
- Our natural environment provides a wide range of access and recreation opportunities, including miles of walking and cycling trails, open water swimming facilities, golf, tennis, football, rugby, bowls, and numerous play areas. It is also rich in cultural heritage, including two museums, a visitor centre, ancient hill forts and a wide range of other archaeological features.

Our community



We provide over

1,800

social housing units on 12 estates across six London Boroughs and the City.

We are the strategic housing authority for the City of London and a landlord responsible for over

1,900

social tenanted properties and over 950 leaseholder properties across London.



Our open spaces provide a unique learning place for

38,000

people from schools, colleges and youth groups.



Our children's social care services are rated

'outstanding'

by Ofsted.



Passionate and proud volunteers help our natural environments thrive giving over

20,000

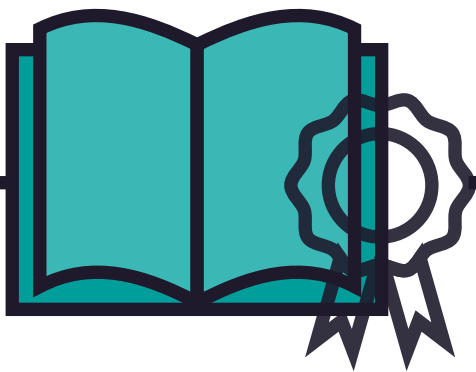
volunteer hours a year.



Volunteer groups play an active role in helping us manage our City Gardens – approximately

180 sites

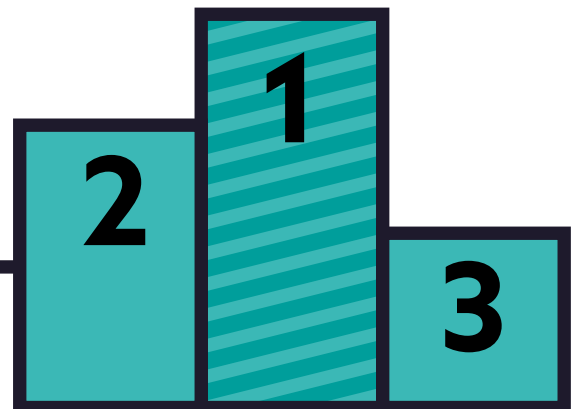
throughout the City and beyond – contributing around 4,500 volunteer hours each year.



Three community libraries – including the award-winning Barbican Music Library – attract

288,000

visits annually.



Our care-related quality of life score for adults is

ranked first

within peer group and of 150 councils.

Education and lifelong learning





- Five out of the ten City of London Academies Trust schools hold an ‘outstanding’ Ofsted rating, and two are rated ‘good’ with ‘outstanding features’.
- City of London School for Girls was the top performing independent school for GCSE results in 2022 and 2023.
- The City of London Freemen’s School is consistently placed among the top five co-educational boarding schools in the UK based on A-Level outcomes.
- The City of London School is ranked as ‘excellent’ by the Independent Schools’ Inspectorate for both quality of pupils’ academic and other achievements, and for quality of pupils’ personal development.
- In 2023, we took on seventy apprentices across City Corporation and partner organisations.

Economic contributions and assets

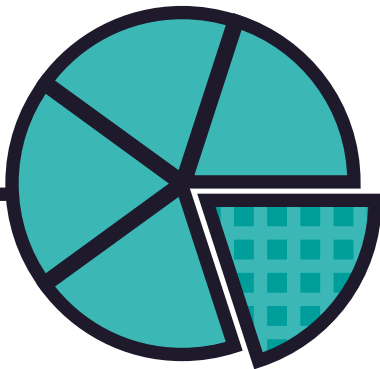
City jobs have grown over 13% since pre-pandemic 2019 to 2022, with nearly **73,000** more jobs than in 2019.



The Salisbury Square development is creating a new civic hub, including a headquarters for the City of London Police and a new modern facility for HM Courts and Tribunals Service in the heart of London's legal centre, creating **49,000** square metres of space.

Relocating the Museum of London will enable more people from London and around the world to visit. This will create a world-class learning experience, capable of hosting blockbuster exhibitions and events in **28,500** square metres of space.





The City accounts for
1 in every 5
financial services jobs in Great Britain.

We manage around 400
revenue projects with a value of
more than **£30 million.**

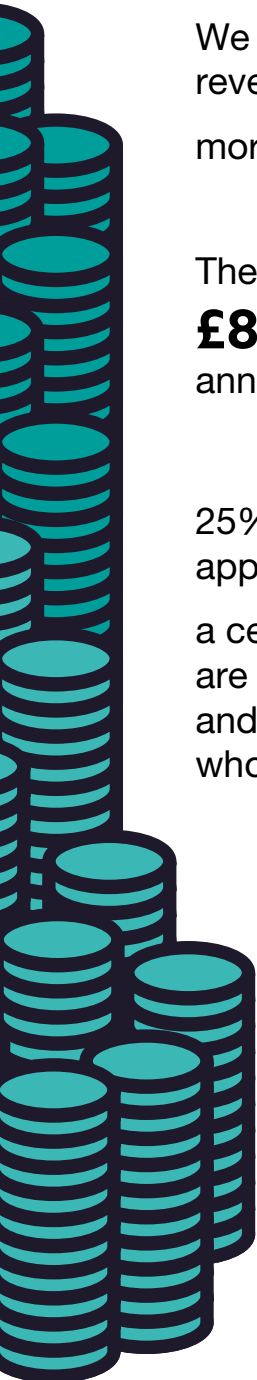
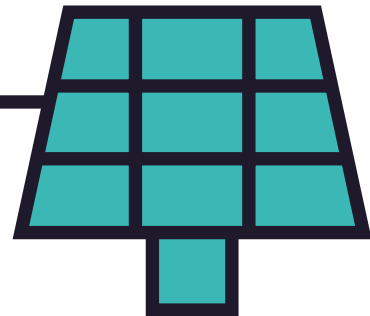
The City generates nearly
£85 billion in economic outputs
annually, supporting the UK economy.

25% of City Corporation new entrant
apprenticeship opportunities, provided through
a centrally funded budget of **£1.4 million,**
are reserved for individual residents of local
and neighbouring authorities aged 18 to 24
who are from disadvantaged backgrounds.

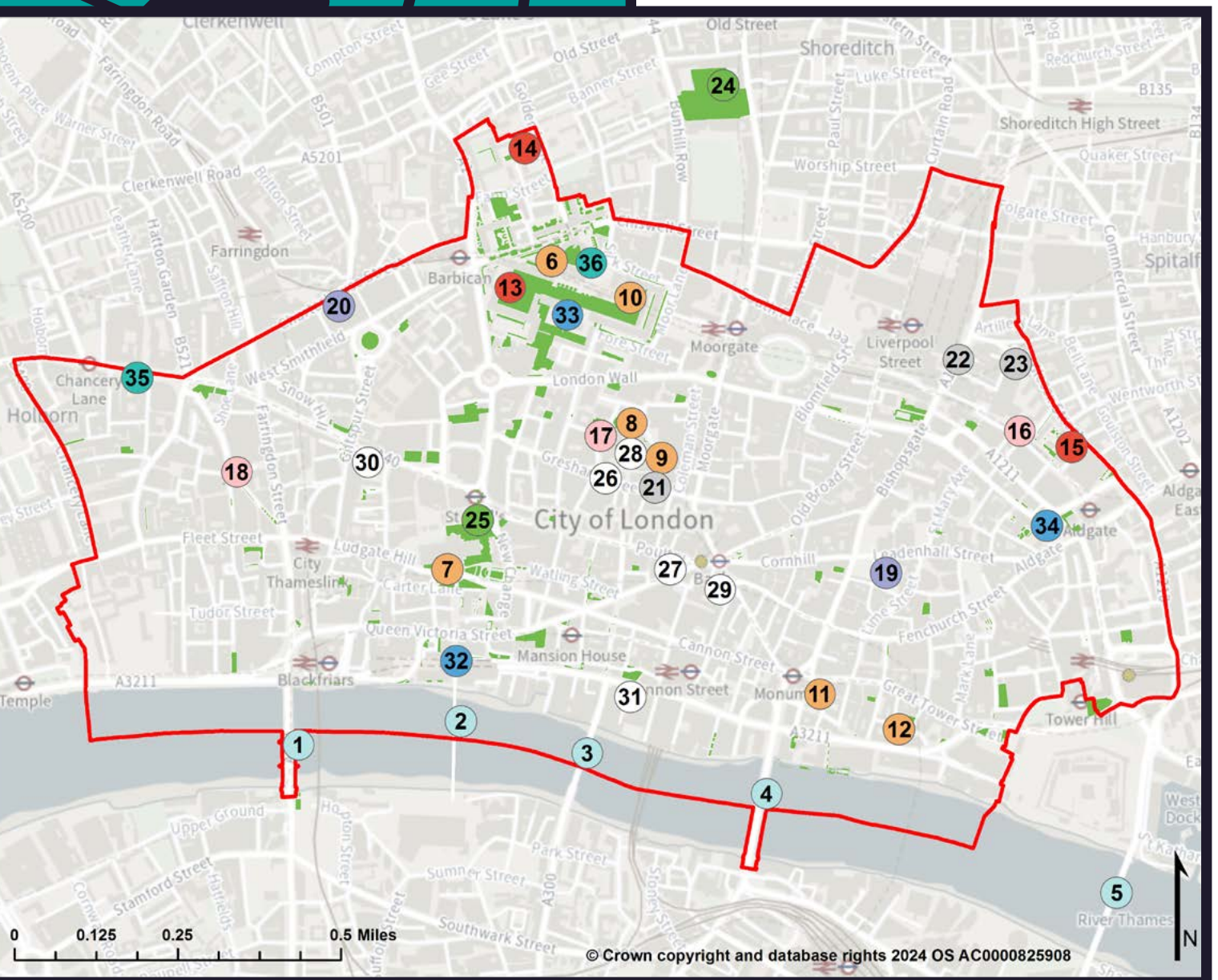
The City also contributes to services across the UK,
generating **£1.1 billion** in business rates alone.

Property fund management focuses on maximising
rental income and long-term performance for City Fund
and City Estates assets, which total approximately
£3 billion in value across 250 properties. Portfolio
performance exceeds the industry benchmark (MSCI
total returns) over a 5, 10 and 28 year time frame.

A solar farm in Dorset
constructed through a power
purchase agreement (PPA) has
reduced energy costs for the City
Corporation by **£20 million**
per annum. It is the first of its kind
in the UK within the public sector.



Our responsibilities in the Square Mile



Key



Blackfriars Bridge **1**
Millennium Bridge **2**
Southwark Bridge **3**
London Bridge **4**
Tower Bridge **5**



Barbican Library **6**
Barbican Arts Centre **6**
City of London Information Centre **7**
City of London Police Museum **8**
Guildhall Art Gallery and Roman Amphitheatre **9**
Guildhall School of Music and Drama **10**
The Monument **11**
Billingsgate Roman House & Baths **12**



Barbican Estate **13**
Golden Lane Estate **14**
Middlesex Street Estate **15**



Artizan Street Library **16**
Small Business Research and Enterprise Centre (SBREC) **17**
Shoe Lane Library **18**



Leadenhall Market **19**
Smithfield Market **20**



City of London Police Headquarters **21**
Bishopsgate Station **22**
City of London Police (Support services and operational functionality) **23**



Bunhill Fields **24**
City Gardens and Open Spaces (all green areas) **25**



City Bridge Foundation **26**
City of London Magistrates Court **27**
Guildhall **28**
Mansion House - Office & Home of the Lord Mayor of the City of London **29**
Central Criminal Court (The Old Bailey) - Office & Home of the Sheriffs of the City of London **30**
Walbrook Wharf **31**

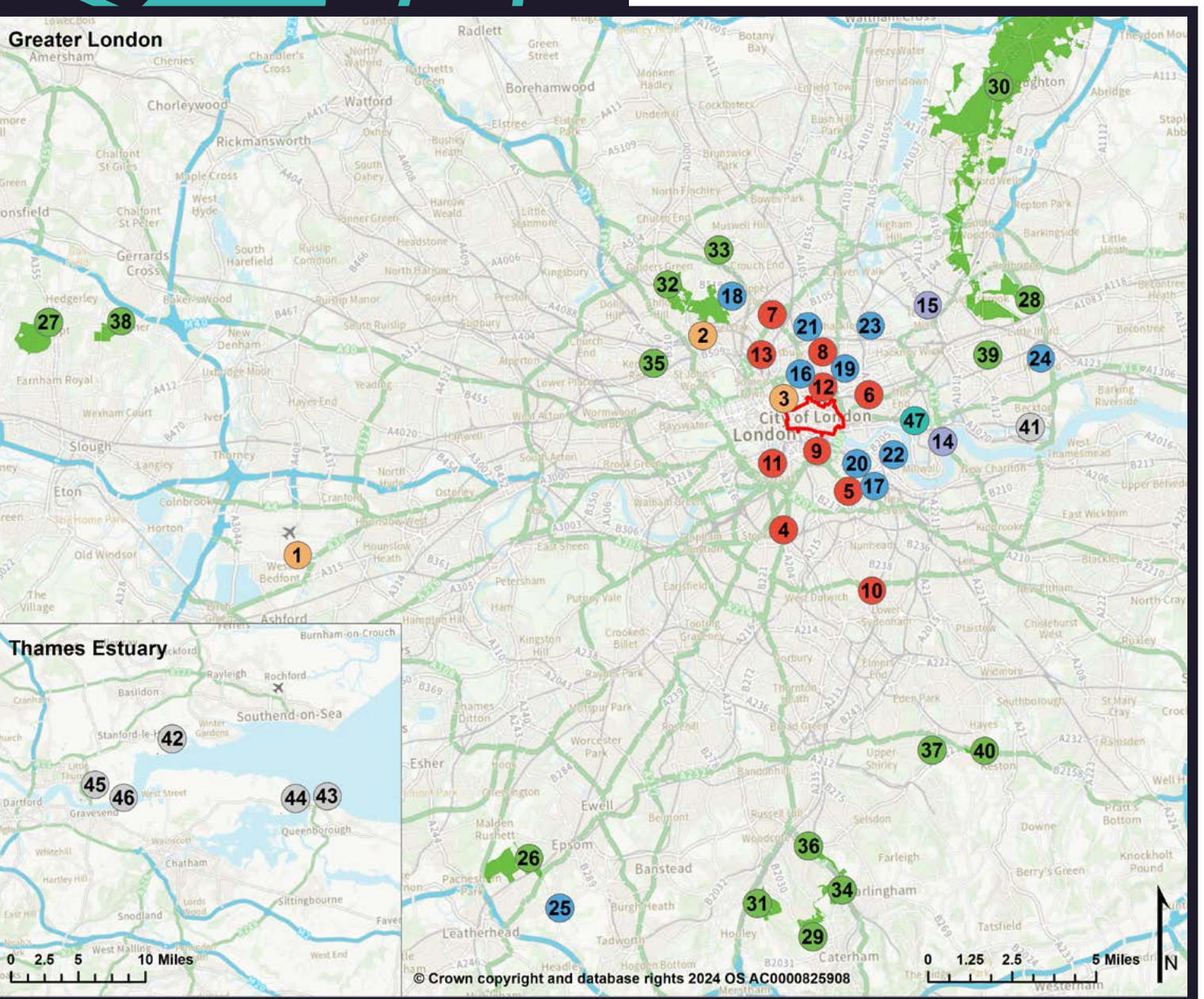


City of London School **32**
City of London School for Girls **33**
The Aldgate School **34**



Gresham College **35**
London Symphony Orchestra **36**

Our responsibilities outside the Square Mile



Key



Heathrow Animal Reception Centre **1**
Keats House **2**
London Metropolitan Archives **3**



Almshouses **4**
Avondale Square **5**
Dron House **6**
Holloway Estate **7**
Isleden House **8**
Southwark Estates **9**
Sydenham Hill Estate **10**
William Blake Estate **11**
Windsor House Estate **12**
York Way Estate **13**



Billingsgate Market **14**
New Spitalfields Market **15**



City Junior School **16**
City of London Academy Islington **16**
City of London Primary Academy Islington **16**
City of London Academy Southwark **17**
City of London Academy Highgate Hill **18**
City of London Academy Shoreditch Park **19**
Galleywall Primary City of London Academy **20**
City of London Academy Highbury Grove **21**
Redriff Primary City of London Academy **22**
The City Academy, Hackney **23**
Newham Collegiate Sixth Form Centre **24**
City of London Freeman's School **25**



Ashted Common **26**
Burnham Beeches **27**
Cemetery and Crematorium **28**
Coulsdon Common **29**
Epping Forest **30**
Farthing Downs and New Hill **31**
Hampstead Heath **32**
Highgate Wood **33**
Kenley Common **34**
Queen's Park **35**
Riddlesdown **36**
Spring Park **37**
Stoke Common **38**
West Ham Park **39**
West Wickham Common **40**



London City Airport **41**
London Gateway **42**
Sheerness **43**
Thamesport **44**
Tilbury **45**
Denton Office **46**



Museum of London Docklands **47**

City of London Corporation sponsors ten academies across London (16-24 above - N.B. City Junior School (16) is an Independent School).

City of London Corporation has international offices in four countries.



Corporate Strategy & Performance Team

Town Clerk's Department

City of London Corporation

PO Box 270 | Guildhall | London, EC2P 2EJ

T: +44 (0) 20 7606 3030 | E: contact.centre@cityoflondon.gov.uk

